



RG-NBR1100

V1.4

©2009

RGOS RGNOS®

®



NBR NBR80, NBR300, NBR1100, NBR1200, NBR2000,
NBR2500 NBR3000

NBR



NBR



LED



DHCP NAT IP PPPoE



-
-
-

1

5

Terminal Display
8.5

Terminal Display

Courier New

2

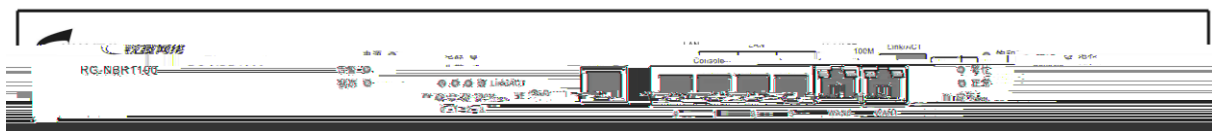


NBR

1.1 NBR

1.1.1 NBR1100

1.1.1.1 NBR1100



1-5 NBR1100



1-6 NBR1100

(× ×)	44.4mm× 437mm× 210mm
	200-240V~;50Hz
	20W
	0~45
	10~90%



SDRAM

FLASH

1.1.1.3 NBR1100

	NBR
LINK/ACT	
100M	100M 10M
Reset	5 5
CPU	1 2 3 4

- PPPoE
- X-MODEM
- NAT
- TFTP

1.2.2

-
-

1.2.3

- DEBUG
-
-
- Console
- TELNET
- TFTP

1.2.4

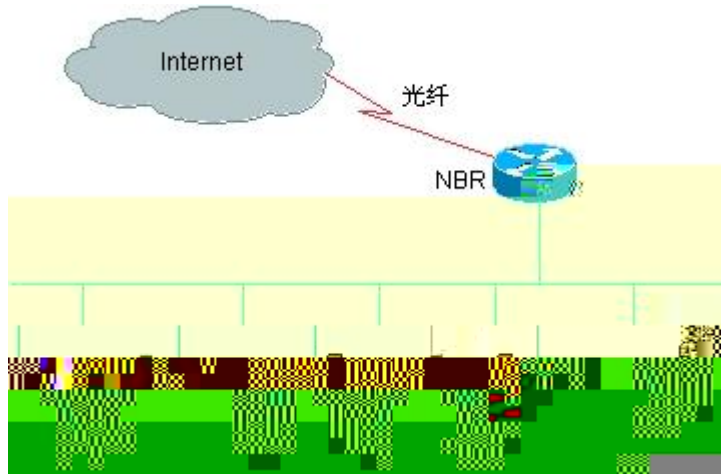
- IP
- PPP PAP CHAP
- MAC
- NAT

1.2.5

- X-MODEM (Windows 95 Windows NT)
UNIX DOS) Console
- TFTP
- BOOTROM

1.3

- NBR
NBR NBR80,NBR200,NBR1000E



1-15 NBR

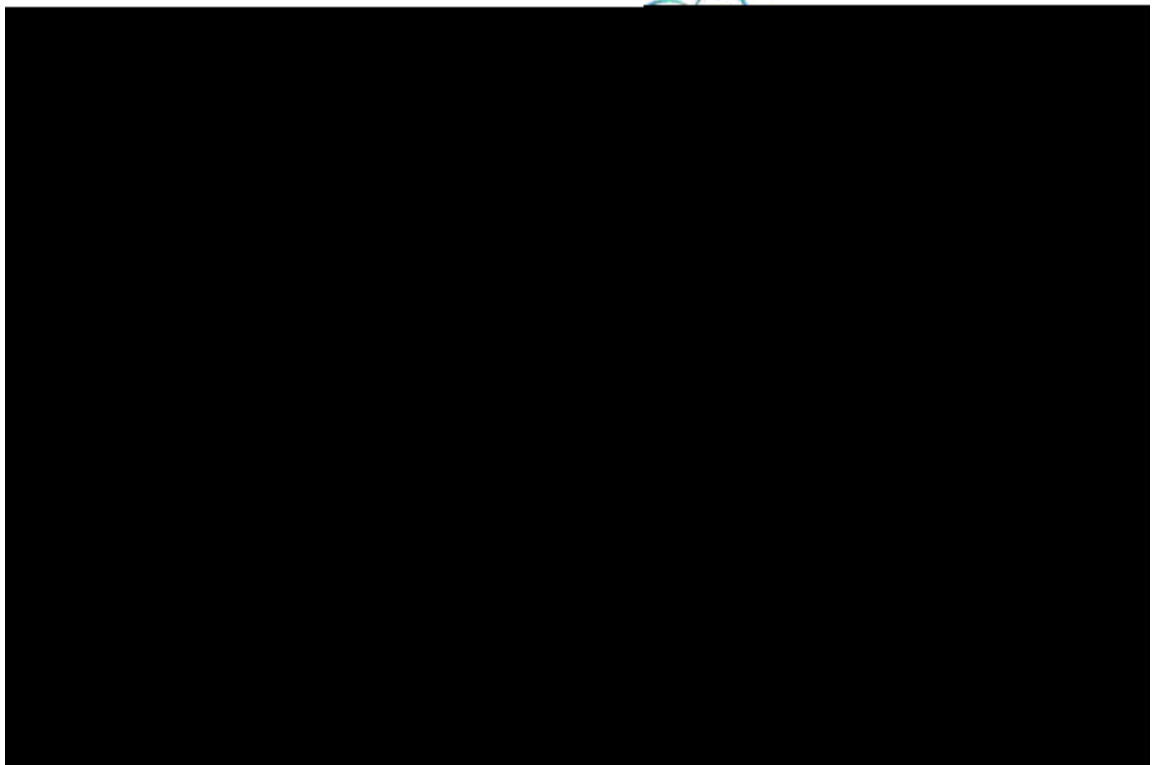
1

NBR

Internet

- 1
- 2
- 3

DDOS



1-16 NBR

2

1000M

100M

200

2

3

2

NBR2000

2

3

3

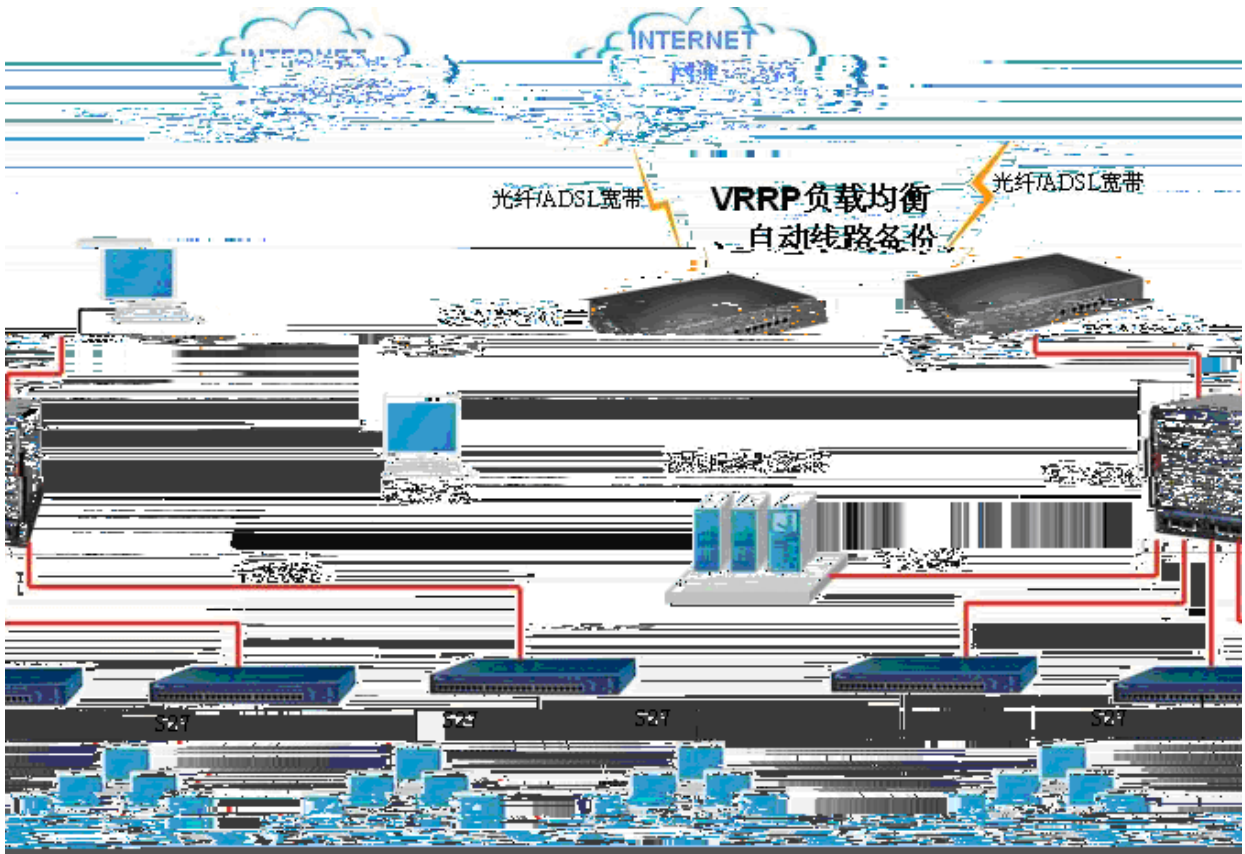
3

3

3

4

301



1-18 NBR

4

400

S65

S65

S65

VLAN

1

3

2

3

4 100M

5

DDOS

2.1

-
-
-
-
-
-
-
-

UPS

2.2

- /
-
-
-
-
-
-

2.2.1 /

15 ~30	0 ~40	40%~65%	10%~90%





2

GB50057-94

LPZ0 LPZ1

IEC

LPZ1 LPZ2

LPZ2 LPZ3

3

4

GB50174-93

4

4

5

2.2.6

2.2.6.1

IN

OUT



1 WAN



2.3

-
-
-

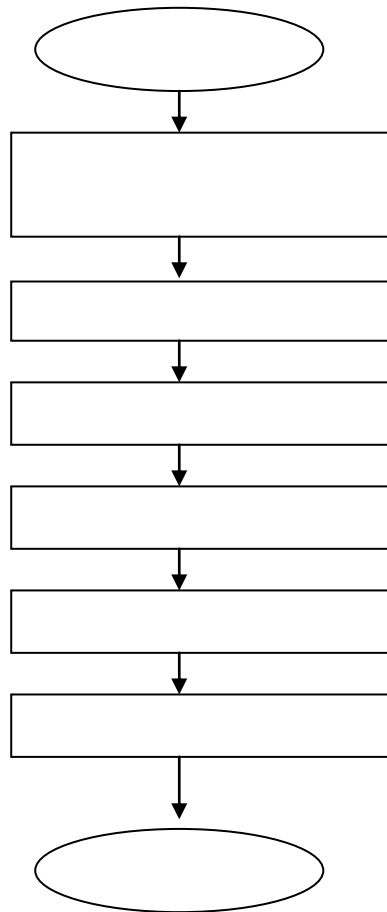
-
-
-

-
-
-



-
- HUB
 - (Windows PC)
 -

3.1



3.2

-
-

3.2.1

3.2.2

-
-
-

10cm

3.3

NBR300/NBR80/NBR1100/NBR1200/NBR2000 200-240~; 50Hz

NBR2500/NBR3000 100-240V~; 50-60Hz

3.4

EIA/TIA-232
WEB

Console

	RJ-45
	EIA/TIA-232
	300-115200bps 9600bps
	1. 2. 3.

NBR

NBR

NBR

NBR

4.1

4.1.1

NBR

IP

192.168.1.1

255.255.255.0

NBR

web

admin

admin

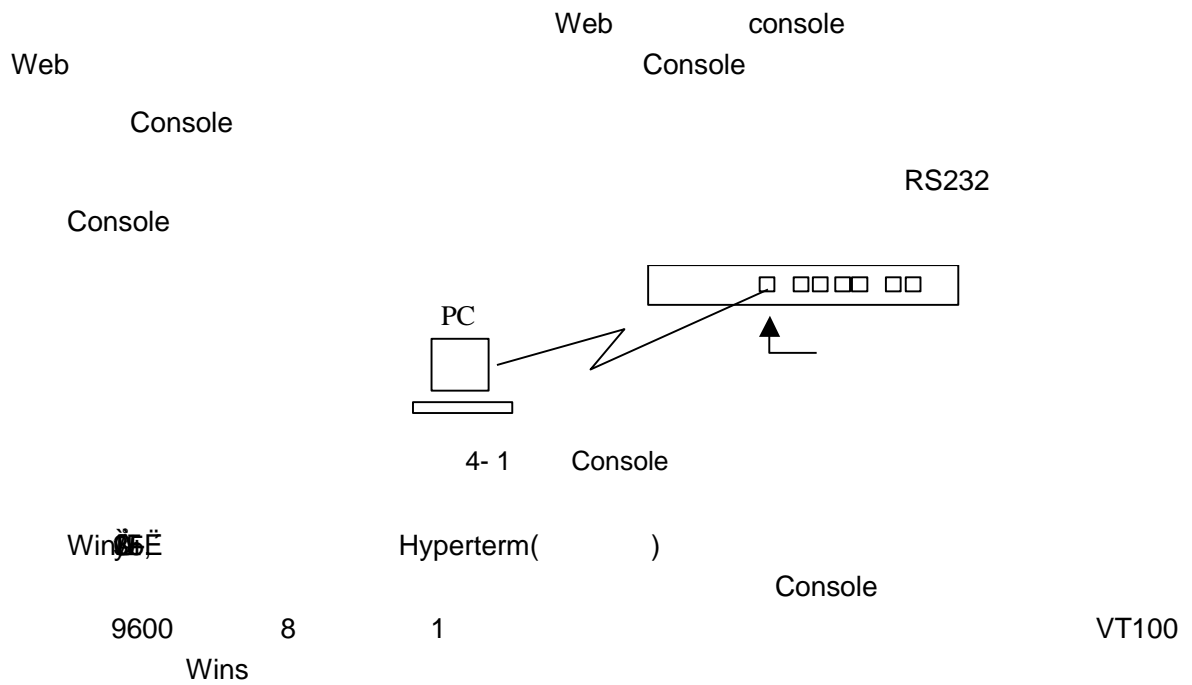
NBR

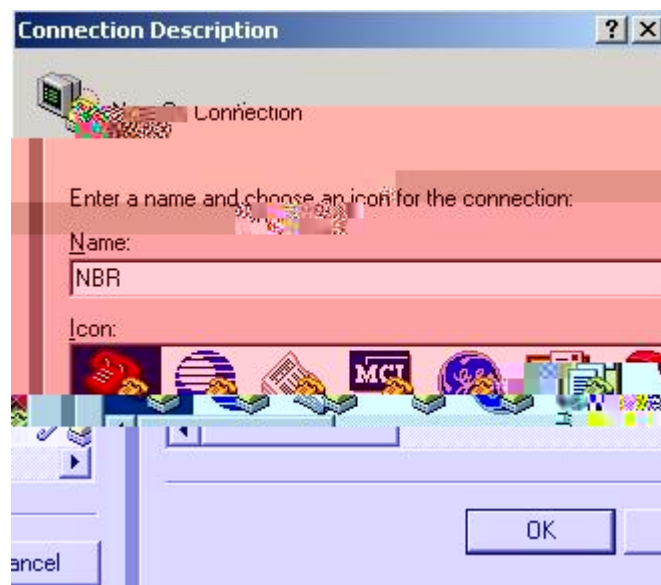
web

NBR

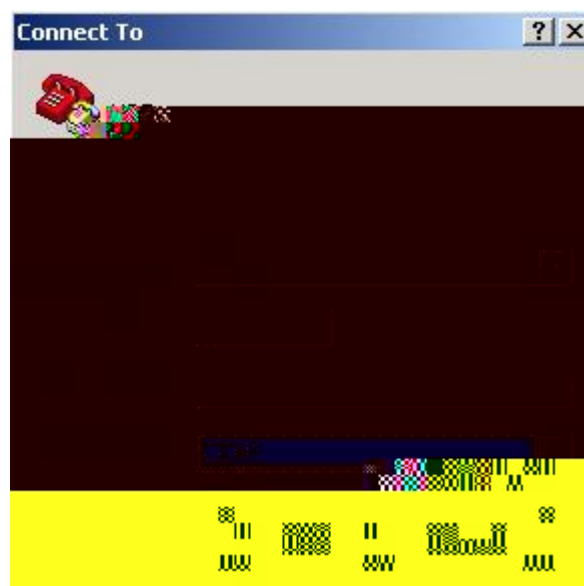
5

4.1.2





4- 2



4- 3

Console

NBR

!!

!!

Red-Giant Operating System Software
RGOS (tm) RELEASE SOFTWARE, Version 9.15 building 6
Copyright (c) 2004 by Red-Giant Network co.,Ltd
Compiled Jun 24 2008 10:01:37 by jiangzy

Red-Giant NBR1000 series NBR1000
Motorola Power PC processor with 16384K bytes of memory.
Processor board ID 00000001,with hardware revision 00000001

SDRAM: 16M
Bank0: 00000000 - 00FFFFFF 16M

System power off accidentally last.
Parallel FLASH ID: 0000010F
Size :512 KB
Serial FLASH ID: 0000ECE6
Size :8192 KB
Init nand flash device information for NBR1000.

MII not found.

pci information in the system

=====

slot	seq	bus	int	dev	fun	start	end	config	devid	fbtb	name
00	00	00	01	21	00	80001000	80001fff	8000a800	0020100b	1	Ethernet
01	00	00	00	20	00	80000000	80000fff	8000a000	0020100b	1	Ethernet

card information in the system

=====

NBR

setup

4.1.5 Setup

setup

setup

setup

```

2. PPPoE
3. DHCP IP
   (1 - 2):2
   PPPoE :user
   PPPoE :user
   ISP Kbits (1-1000000):500

   WAN [no]:

: telnet LAN IP
LAN [no]:
LAN [no]:

(LAN):
(0 - 3):

(LAN):
(0 - 3) ', ' :

:
0.
1.
2.
(0 - 2):

[yes]:
WAN ping [yes]:

:
:nbr
:aaa
telnet :bbb
:
WAN 0: IP
: 202.101.1.1 255.255.255.0
:202.101.1.254
NAT :202.101.1.1 202.101.1.3
: DNS 202.101.98.55
: 10000 Kbits
WAN 1: PPPoE
:user
:user
: 500 Kbits
:

```



NBR

Setup

NBR

RGOS

CD-ROM

RGOS

RGOS

www.ruijie.com.cn

4.2 Web

LAN

WAN

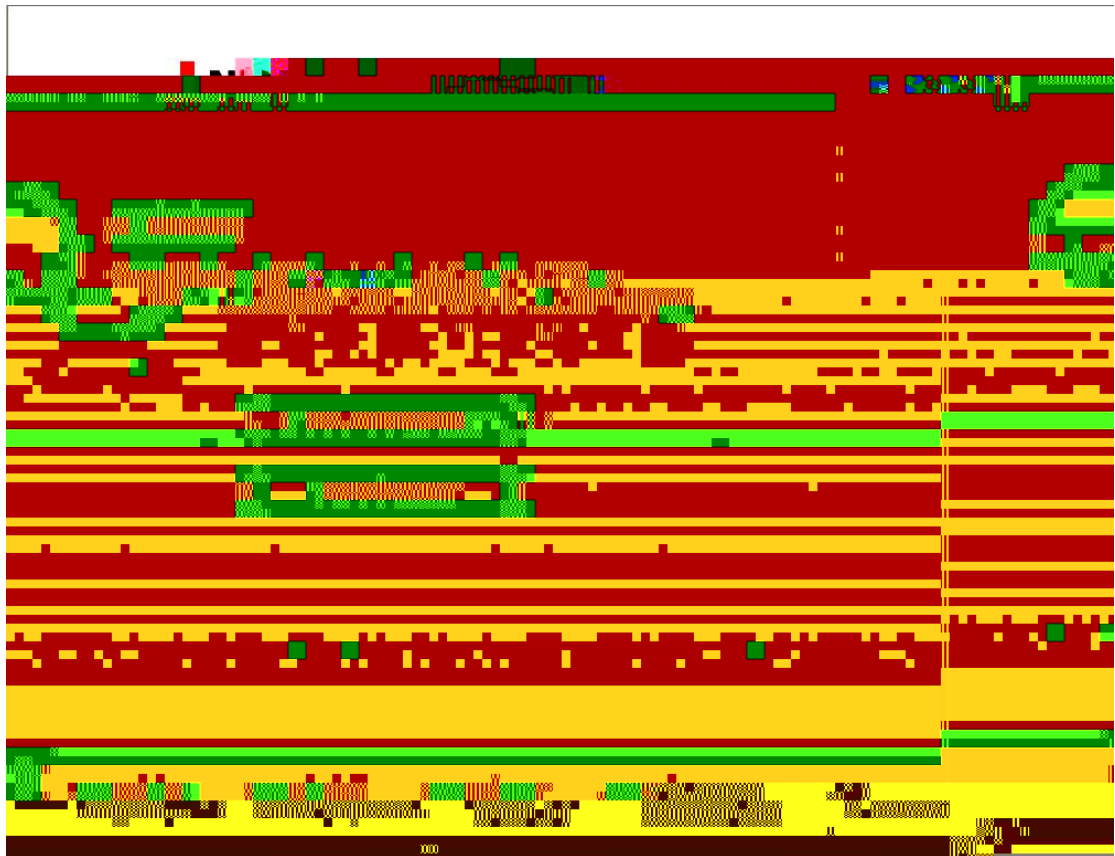
IP

PC

IP

IP

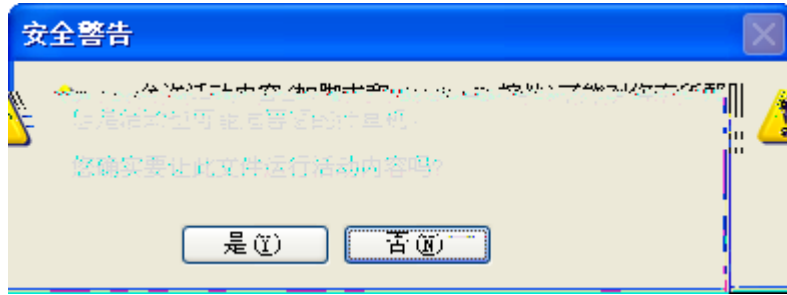
<http://192.168.1.1>



4-6

" WEB " " "

WEB WEB " (Y)"



4-7 " (Y)"

" WEB

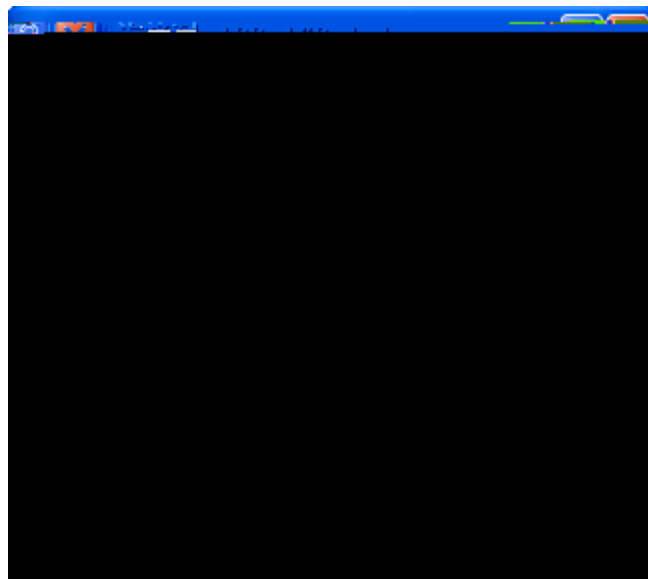
" "

"

WEB

admin

admin



4-8



js web flash web htm

" " " WED
" Web

4.3 Web

web WEB
.doc