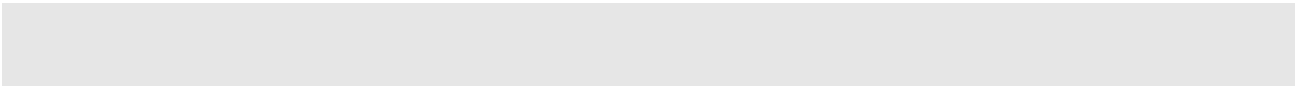
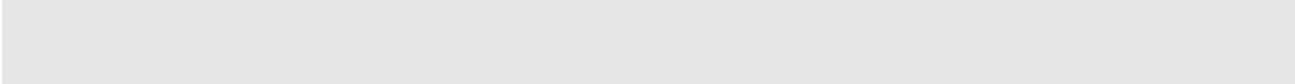




**WGP500**

©2008





Arial

{ }      { }

{ x|y|... }

[ x|y|... ]

//

**1.**

r

2.

3.

a

Enter a

" "

1+ 2  
" Alt" " A"

Ctrl+Alt+A " Ctrl"

1 2

Alt F Alt

F

	1.4	.....	5
	1.5	.....	5
2		.....	7
	2.1	.....	7
	2.2	.....	7
3		.....	8
	3.1	.....	8
	3.2	IE Web .....	9
	3.3	.....	11
	3.4	.....	14
	3.5		
	4.4	802.1Q VLAN .....	22
	4.5	.....	23
	4.6	.....	24
	4.7	.....	28
	4.8	.....	28
	4.9	.....	30
	4.10	Smart WDS .....	31
	4.11	.....	32
5		.....	36
	5.1	.....	36
	5.2	STA .....	36
	5.3	.....	37
	5.4	.....	37
	5.5	.....	38
	5.6	.....	39
	5.7	.....	41
	5.8	.....	41
	5.9	AP .....	42
	5.10	.....	46

---

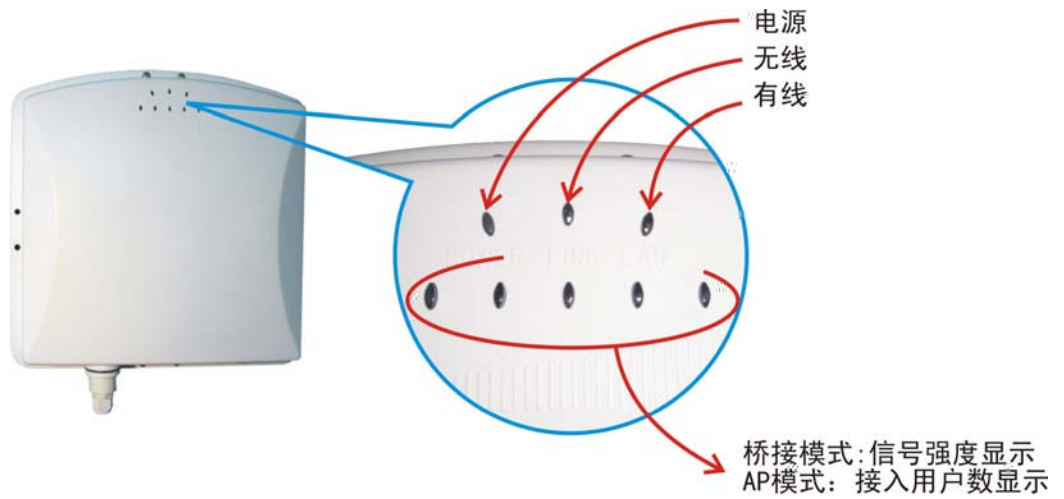
6	FAQ .....	47
6.1	MAC .....	47
6.2	STA AP? .....	47
6.3	? .....	47
6.4	.....	48
6.5	..	48
6.6	WEB .....	49
7	.....	50
7.1	.....	50
7.2	.....	53
7.3	ASCII .....	54

# 1

IEEE 802.11g ,  
ISP

RG-WGP500 2.4GHz ,  
RG-WGP500

## 1.1





MAC

WEP64/128/152

802.1X, WPA, WPA-PSK, WPA2, WPA2-PSK

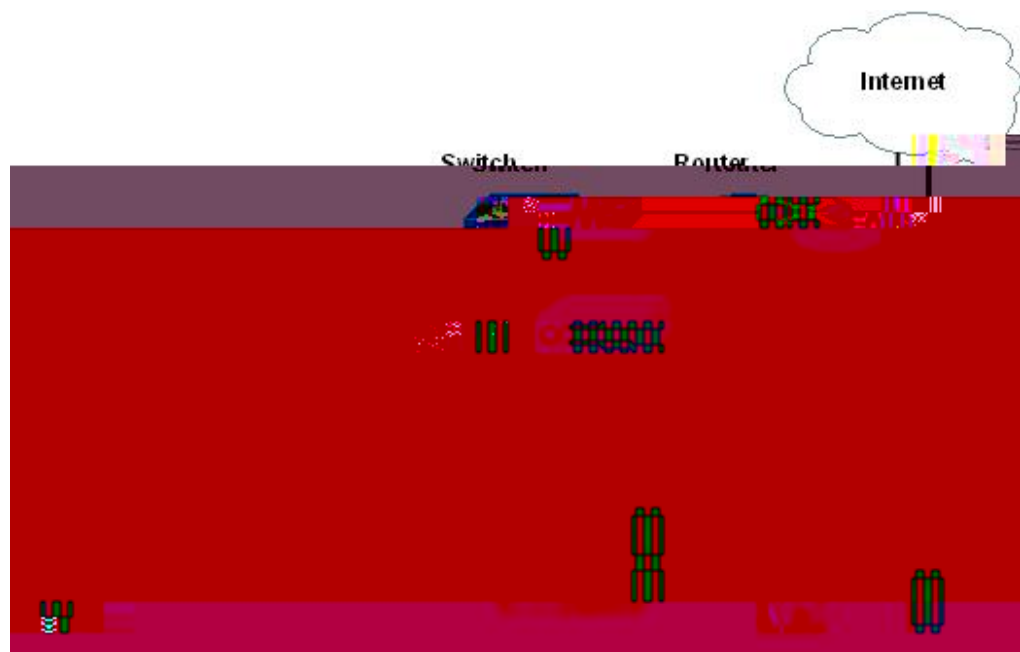
8 VAP(Virtual Access Point) 802.1Q VLAN

Super Router

WEB,SNMP, CLI

12V

## 1.4



## 1.5

E-mail



# 3

## 3.1

	admin
	password
	APxxxxxx xxxxxx 6 MAC
/	
AP	
IP	IP STATIC IP 192.168.0.228 255.255.255.0 0.0.0.0 / DNS 0.0.0.0
	802.11g
/	13/2.472GHz
	48Mbps
	Full
CTS	
RTS	2346
	2346
	100
DTIM	1

WMM	
SSID	Wireless
802.1Q VLAN	Disable
NTPD	
VoIP	
SNMP	SNMP Trap Server 192.168.0.254 Read Community public Write Community private

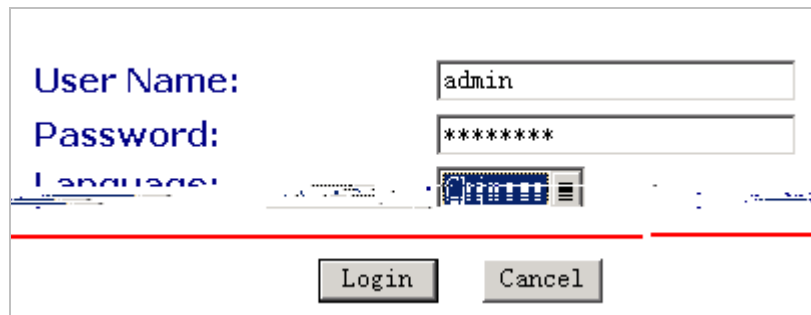
## 3.2 IE Web

Web



IP IP u

2. " "



3. Username

### 基本信息

#### 接入点信息

接入点名称	AP8e7d1b
MAC地址	00:60:B3:8E:7D:1B
无线卡片名称	XG-622H
国家区域	中国
软件版本号	4.0.9_b500 (Jul 25 2007)
Bootloader版本	1.9(c) 2006/10/25
虚拟局域网	关闭
管理 VLAN ID	

#### 当前IP设定

IP类型	STATIC
IP地址	192.168.0.229
子网掩码	255.255.255.0
默认网关	0.0.0.0

#### 当前无线设定

操作模式	桥接 (多点)
信道/频率	1 / 2.412GHz
安全配置文件	Profile1

状态	No.	配置文件名称	SSID	安全	VLAN	打
开	1	Profile1	Wireless	开放系统		

## 3.3



### 基本设置

接入点名称: AP32f2b9

国家区域: 中国

有线端速率: 自适应

---

启用 NAT

网桥  路由器

生成树协议:  打开  关闭

STATIC

IP地址: 192.168.0.228

子网掩码: 255.255.255.0

默认网关: 0.0.0.0

主DNS服务器: 0.0.0.0

从DNS服务器: 0.0.0.0

应用 取消 帮助

```

a-z      NetBIOS      15      0-9      A-Z
-        WINS
IP       WEB        ap030201
IE       " ap030201"   Enter   WEB
ping    Ping ap030201
  
```

```

APxxxxxx  xxxxxx  MAC      6  u
u         WINS    TCP/IP
IP        IP     192.168.0.228  IP
192.168.0.X  u
  
```

/	( 802.11g and 11b)
	1-13
	1-13

---

	1-1B3
	1-13
	1-13
	1-13
	1-13

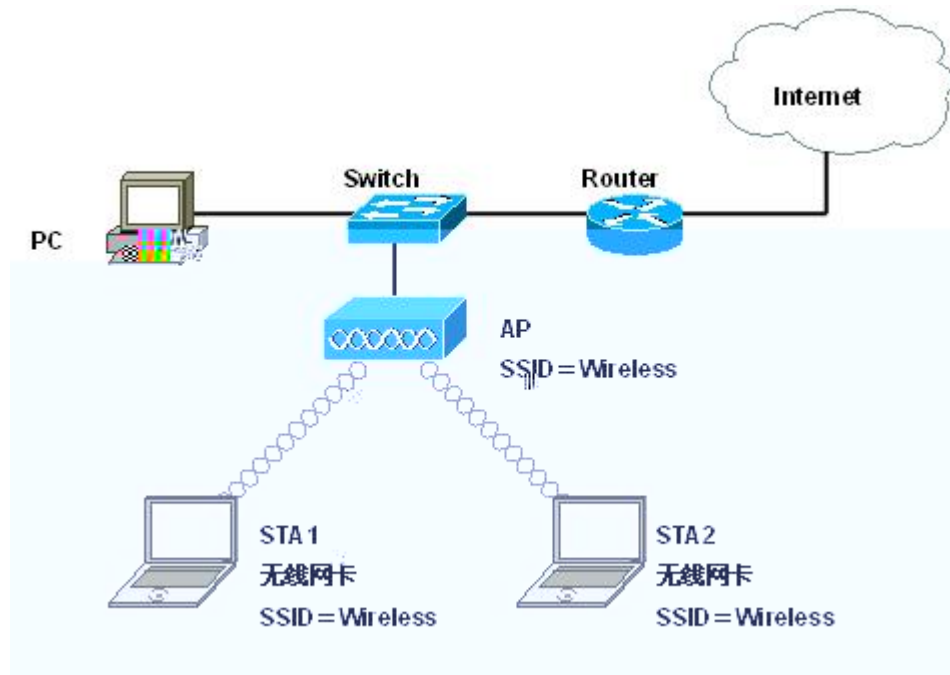


---

DHCP Client	DHCP Server				IP	
DNS	DNS					
	"	"	"	"	"	"







STA1	STA2	SSID	AP	PC	Internet
1.			AP		801.11b
2.	"	"	Profile1~9		802.1Q VLAN
3.	Profile				ESSID, Security
	802.1X	WPA	Radius		
4.	STA	AP			



RADIUS

AP RADIUS

31

STA

STA

## RADIUS

RADIUS RADIUS IP RADIUS

IP RADIUS IP

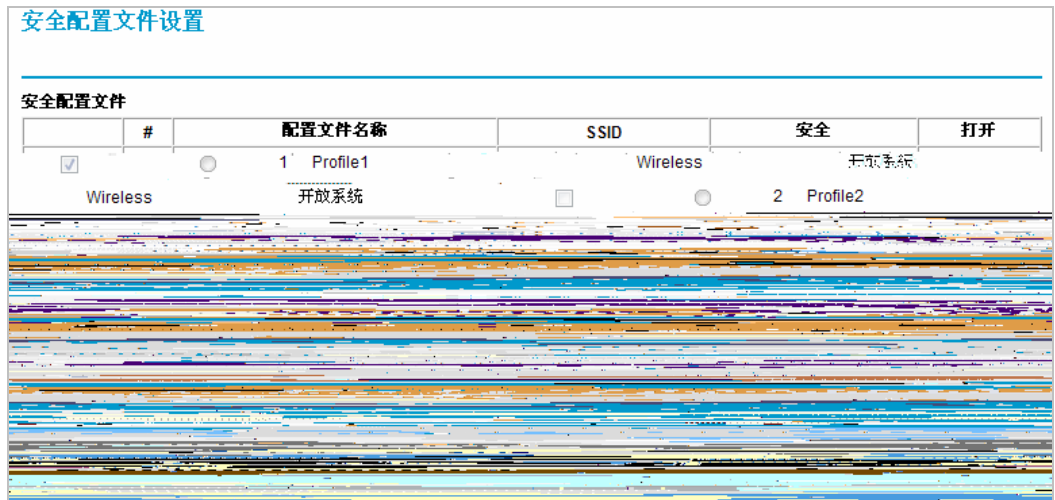
: RADIUS

AP RADIUS

31

## 4.2 VAP AP

VAP 8 VLAN AP 8 AP  
ESSID ESSID



Profile





## 4.3 Bridge

Bridge  
TKIP AES

WEP, TKIP, AES  
WDS

安全配置文件 9 配置

---

网络认证方式：

---

数据加密方式：

Passphrase：

密钥 1：

密钥 2：

密钥 3：

密钥 4：

---

对等模式认证者角色  否  是

WDS

## 4.4 802.1Q VLAN

AP

802.1Q VLAN



启用 802.1Q VLAN

管理 VLAN ID:

安全配置文件VLAN ID:

Profile1 VLAN ID:

Profile2 VLAN ID:

Profile3 VLAN ID:

Profile4 VLAN ID:

Profile5 VLAN ID:

Profile6 VLAN ID:

Profile7 VLAN ID:

Profile8 VLAN ID:

VLAN ID	VLAN ID	AP
VLAN ID	VLAN ID	
	VLAN ID	
	SSID	
4094	ID	VLAN ID ID 1~



**配置AP作为**

网桥   路由器  启用 AnyIP  启用 NAT

**广域网端口**

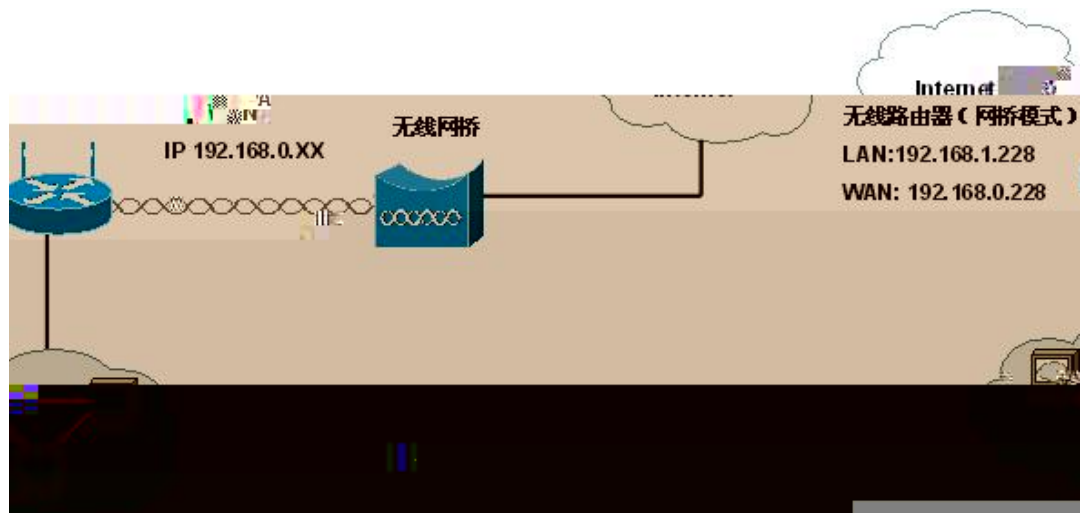
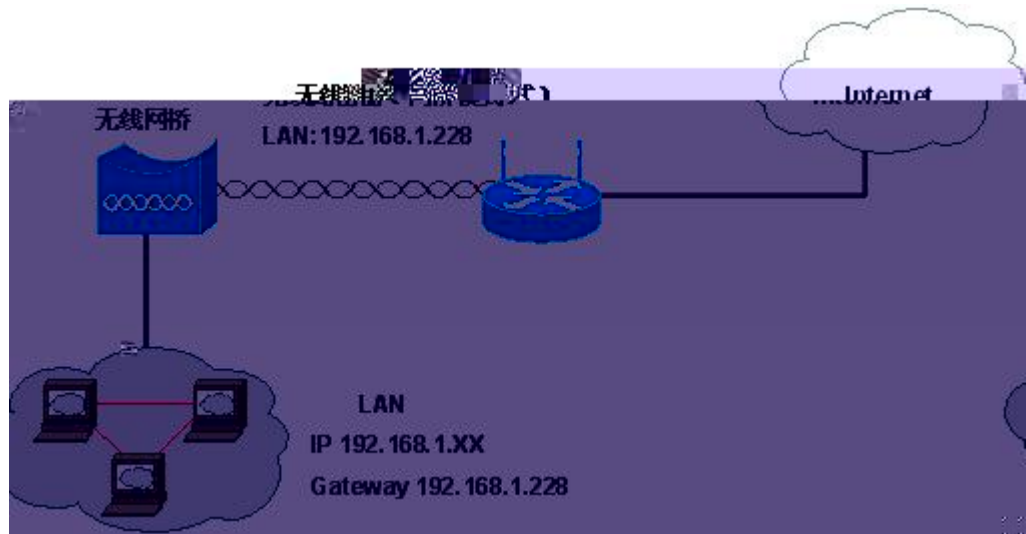
有线端

IP地址	<input type="text" value="192.168.0.228"/>
子网掩码	<input type="text" value="255.255.255.0"/>
默认网关	<input type="text" value="0.0.0.0"/>
主DNS服务器	<input type="text" value="0.0.0.0"/>
从DNS服务器	<input type="text" value="0.0.0.0"/>

无线端

IP地址	<input type="text" value="192.168.1.228"/>
子网掩码	<input type="text" value="255.255.255.0"/>
默认网关	<input type="text" value="0.0.0.0"/>

IP      WAN    IP      LAN    IP

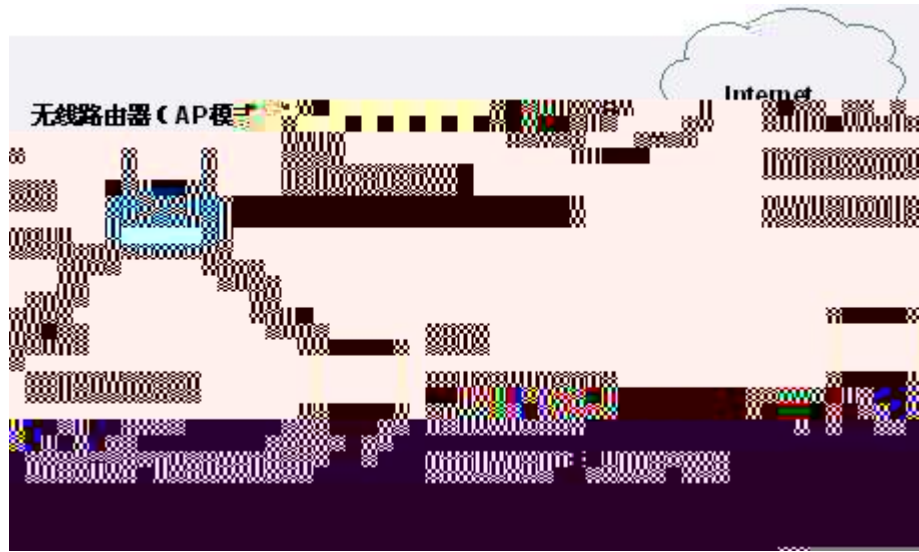


## AP

" AP "

WAN

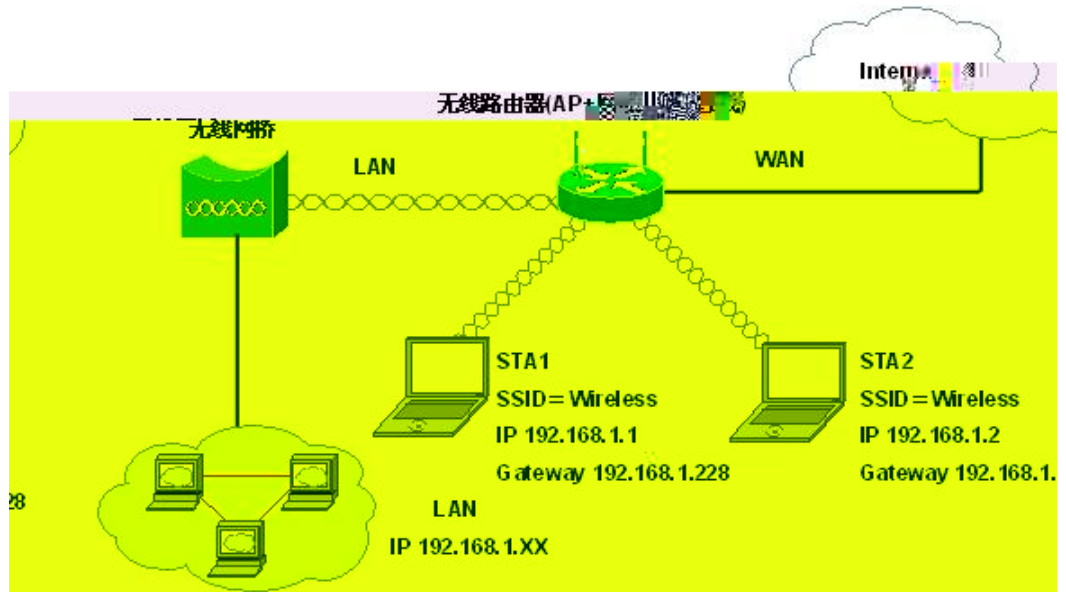
LAN



## AP+

" AP+ "

LAN



AnyIP

LAN

IP





## Super G

Super G

AP Super G

Super G

Super G

	Super G	Super G
AP	22Mbps	30Mbps
	22Mbps	24Mbps

AP	STA	Super G	u
		Super G	Super G
		u	

## 108Mbps

108Mbps SuperG 802.11g / 6/2.637GHz  
108Mbps

AP 108M

108Mbps

	108Mbps	108Mbps
AP	22Mbps	35Mbps
	22Mbps	36Mbps



AP 108Mbps

108Mbps

108Mbps

	108Mbps	108Mbps
--	---------	---------

## 4.10 Smart WDS

Smart WDS ID	WDS	WDS MAC
" WDS "	" Smart WDS "	ID 32
WDS ID	Bridge123	
ID	Smart WDS	" " " "

### WDS设置

---

操作模式

无线端隔离  是  否

---

无线点对多点桥接

启用 Smart WDS

WDS组ID

AP MAC

---

下行流量  :  :  :  :  :  ×64Kbps 手工添加点对多点MAC地址/下行流量

8	Smart WDS	ID
	9	10
	ID	ID
	11	ID
9	2	

Smart WDS

u



## 4.11

IP

### WDS设置

操作模式:

无线端隔离:  是  否

---

无线点对多点桥接

MAC地址/下行流量:

启用 Smart WDS

WDS组ID:

AP MAC:

---

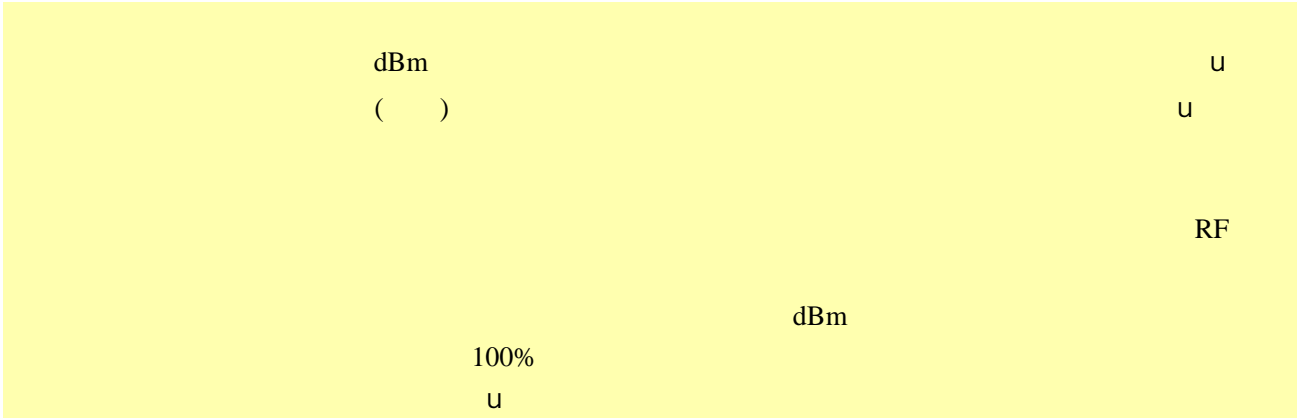
下行流量:  :  :  :  :  :  ×64Kbps

手工添加点对多点MAC地址/下行流量

IP	API
192.168.0.227u	
/	/
u	

3. PC1 ping 192.168.0.2 PC2 192.168.0.227 AP1 192.168.0.228 AP2 ping
  4. / PC1 PC2 /
  5. " "
  6. " " 10000m "
- RF**





7.





## 无线STA列表

STA ID	MAC地址	IP地址	RSSI(dBm)	状态	输出数据包	输入包	输出字节	输入字节
1	00:16:6F:06:B7:AE		-67	Associated	2	1	84	342

刷新

**更改密码**

当前密码

新密码

重输新密码

恢复默认密码  是  否

19

"

"

password

password

## 5.5

### WEB

**更新软件**

浏览查找软件文件:

```
C:\>ftp 192.168.0.228
Connected to 192.168.0.228.
220 (vsFTPD 1.1.3)
User (192.168.0.228:(none)): admin
331 Please specify the password.
Password:
230 Using binary mode to transfer files. Login successful. Have fun.
ftp> put RG-WGP500.rmt
200 PORT command successful. Consider using PASV.
150 Ok to send data.
226 File receive OK.
ftp: 3973128 bytes sent in 0.55Seconds 7263.49Kbytes/sec.
ftp> quit
221 Goodbye.
```

### 3.

RG-WGP500.rmt

t

## 5.6

Web

**备份 / 恢复设定**

---

当前设定备份到一个文件

---

从文件中恢复备份设定

文件:

---

恢复出厂默认设定

1. " / " " "  
C:\RG-WGP500.cfg  
RG-WGP500.cfg
2. " / " " "  
C:\RG-WGP500.cfg " "

## FTP

1. ftp 192.168.0.228 admin password
2. " get RG-WGP500.cfg"  
C:\RG-WGP500.cfg

```
C:\>ftp 192.168.0.228
Connected to 192.168.0.228.
220 (vsFTPD 1.1.3)
User (192.168.0.228:(none)): admin
331 Please specify the password.
Password:
230 Using binary mode to transfer files. Login successful. Have fun.
ftp> get RG-WGP500.cfg
200 PORT command successful. Consider using PASV.
150 Ok to send data.
226 File receive OK.
ftp: 3973128 bytes sent in 0.55Seconds 7263.49Kbytes/sec.
ftp> quit
221 Goodbye.
```

3. " put RG-WGP500.cfg"

RG-WGP500.cfg

t

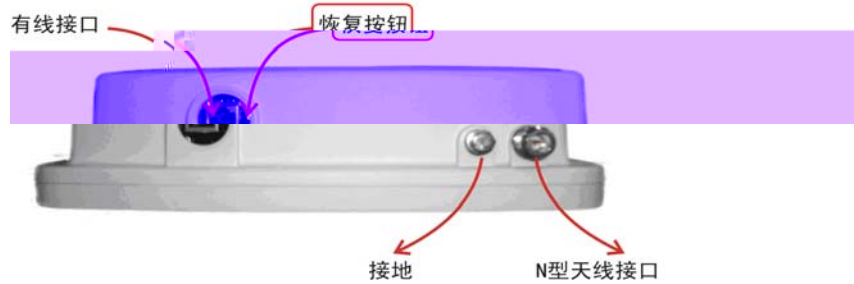
5.7

Web

" / " " "

Reset

" Reset" 5



5.8

" " " "



Read Community

Write Community

" "

## 2. FTP MIB file

ftp 192.168.0.228 admin password

" get RG-WGP500.mib"

RG-WGP500.mib

```
C:\>ftp 192.168.0.228
Connected to 192.168.0.228.
220 (vsFTPD 1.1.3)
User (192.168.0.228:(none)): admin
331 Please specify the password.
Password:
230 Using binary mode to transfer files. Login successful. Have fun.
ftp> get RG-WGP500.mib
200 PORT command successful. Consider using PASV.
150 Opening BINARY mode data connection for /mnt/ramd/RG-WGP500.mib (35518
bytes).
226 File send OK.
ftp: 35518 bytes received in 0.03Seconds 1183.93Kbytes/sec.
ftp> quit
221 Goodbye.
```

RG-WGP500.mib

## SSH AP

CLI

SSH

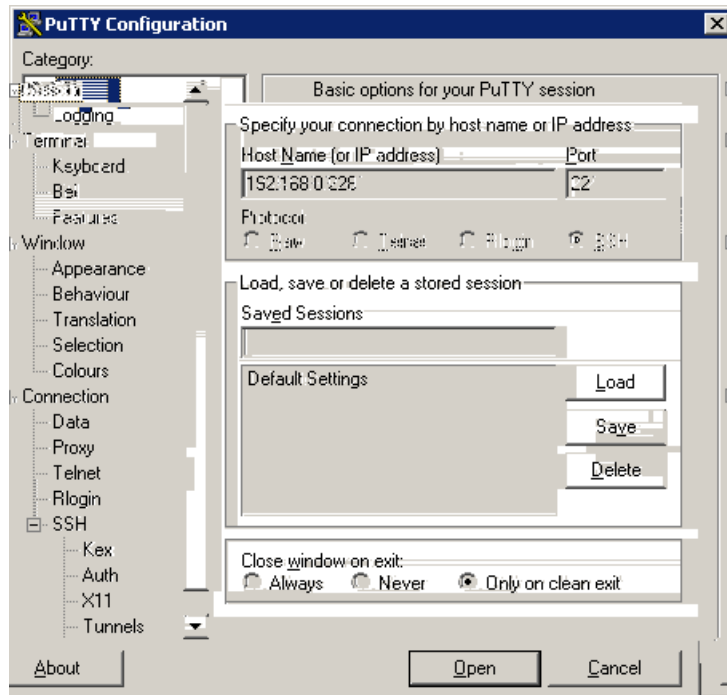
Putty

### 1. Putty

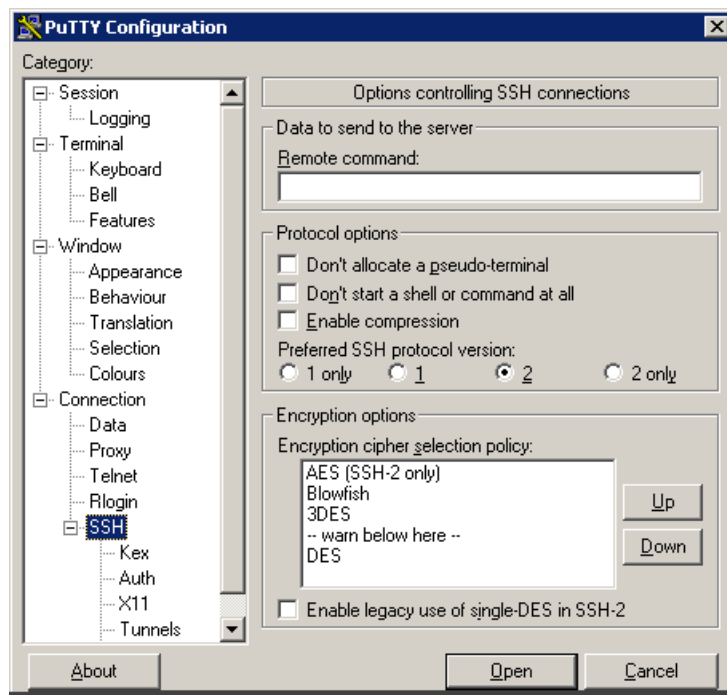


putty.exe

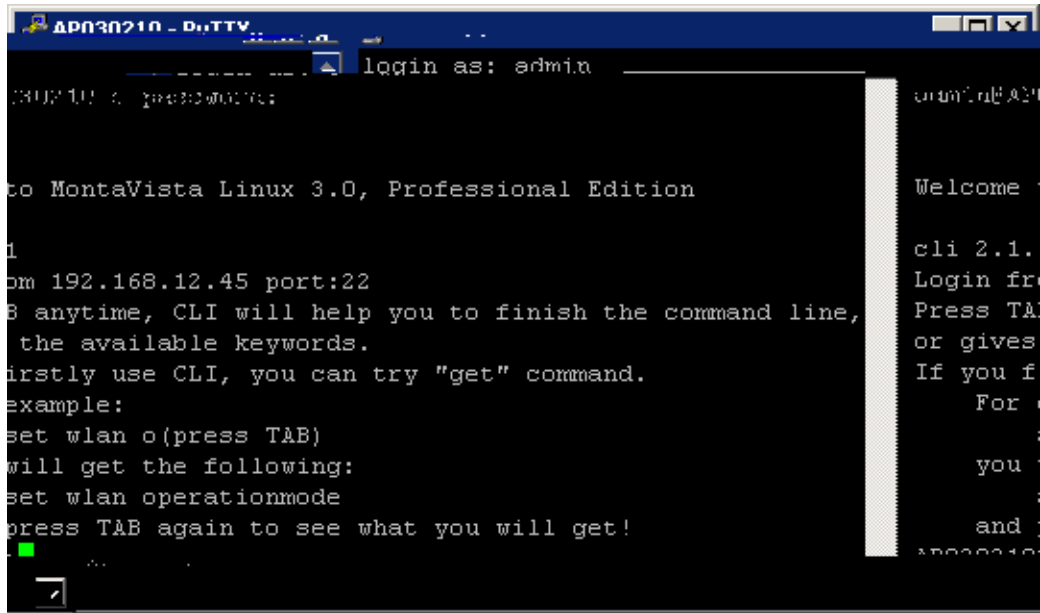
### 2. IP , Protocol SSH.



3. "SSH" Encryption cipher selection policy ,  
"3DES"



4. Open



/ admin/password

5. " help"

## PPTP AP

PPTP PPTP SERVER VPN  
Win2000server/Win2003Server SERVER

1. SERVER

" MS-CHAPV2"

IP " IP " " IP  
"

2. PPTP PPTP

3. VPN " "

4. PPTP IP

5. PPTP



## 6 FAQ

### 6.1 MAC

MAC

MAC

Web

MAC

### 6.2 STA AP?

STA  
AP

AP

STA

STA  
AP

AP  
AP

AP STA

STA

STA  
STA AP

2.4G

STA AP  
AP

STA

802.11

### 6.3 ?









WEP

64 / 128 / 152

WPA

WPA WPA2 WPA PSK WPA2 PSK

## 7.2

802.11g	IEEE802.11g OFDM	ISM 2.4GHz	11a 54Mbps	11b	54Mbps
Access Point	Access Point		AP	PC	AP
Infrastructure				Access Point	
ESS	infrastructure Service Set ( ESS ) AP	ESS ESSID	ESS channel	BSS roaming	BSSs roaming
WEP	“Wired Equivalent Protection ” encryption IEEE 802.11		WEP		WEP 40bits/128bits
Access Control	Access Control table			MAC AP	
Bridge	OSI				
DHCP Client Server	DHCP DHCP Server	DHCP	IP	IP	DHCP Client
Encryption				WAN	
IP Address and Network Mask		IP			
LAN&WAN					
MAC Address		MAC	6	IEEE	MAC
NetBIOS					



-	2D	E	45	]	5D	u	75
.	2E	F	46	^	5E	v	76
/	2F	G	47	_	5F	w	77
0	30	H	48	`	60	x	78
1	31	I	49	a	61	y	79
2	32	J	4A	b	62	z	7A
3	33	K	4B	c	63	{	7B
4	34	L	4C	d	64		7C
5	35	M	4D	e	65	}	7D
6	36	N	4E	f	66	~	7E
7	37	O	4F	g	67		
8	38	P	50	h	68		