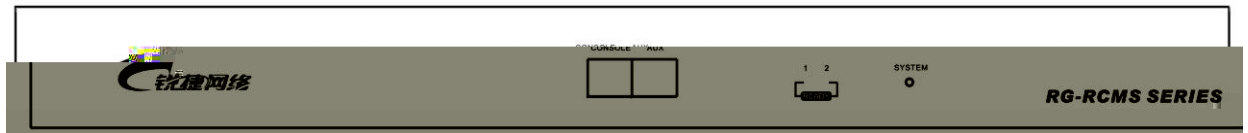


RG-RCMS

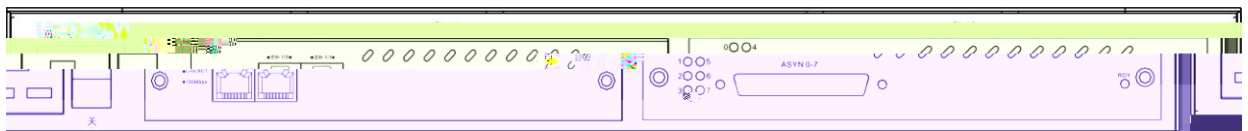
1.1 RCMS

RCMS RACK Control & Management Server

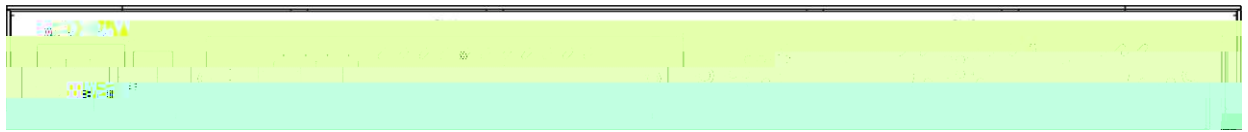
RCMS RCMS-8 RCMS-16



RCMS



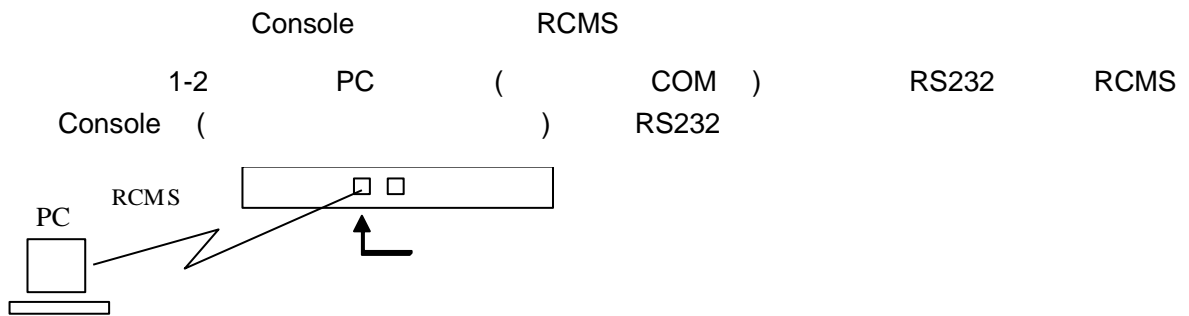
RCMS-8

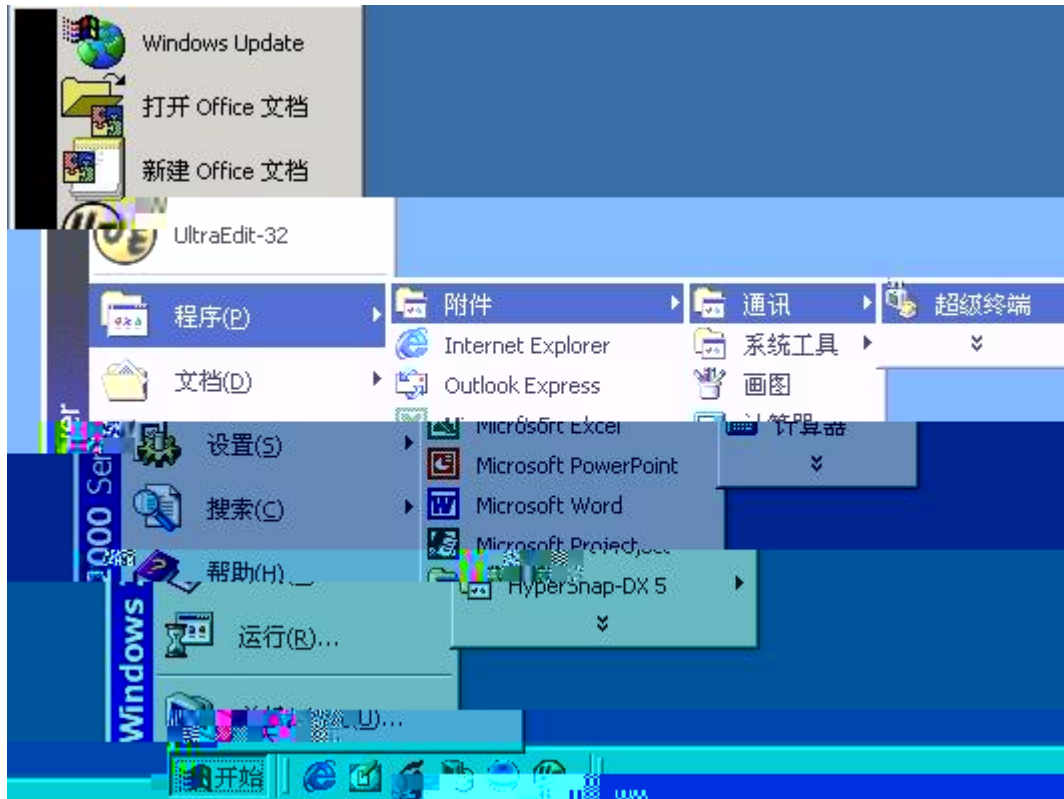


RCMS-16

1-1 RCMS RCMS-8, RCMS-16

1.2

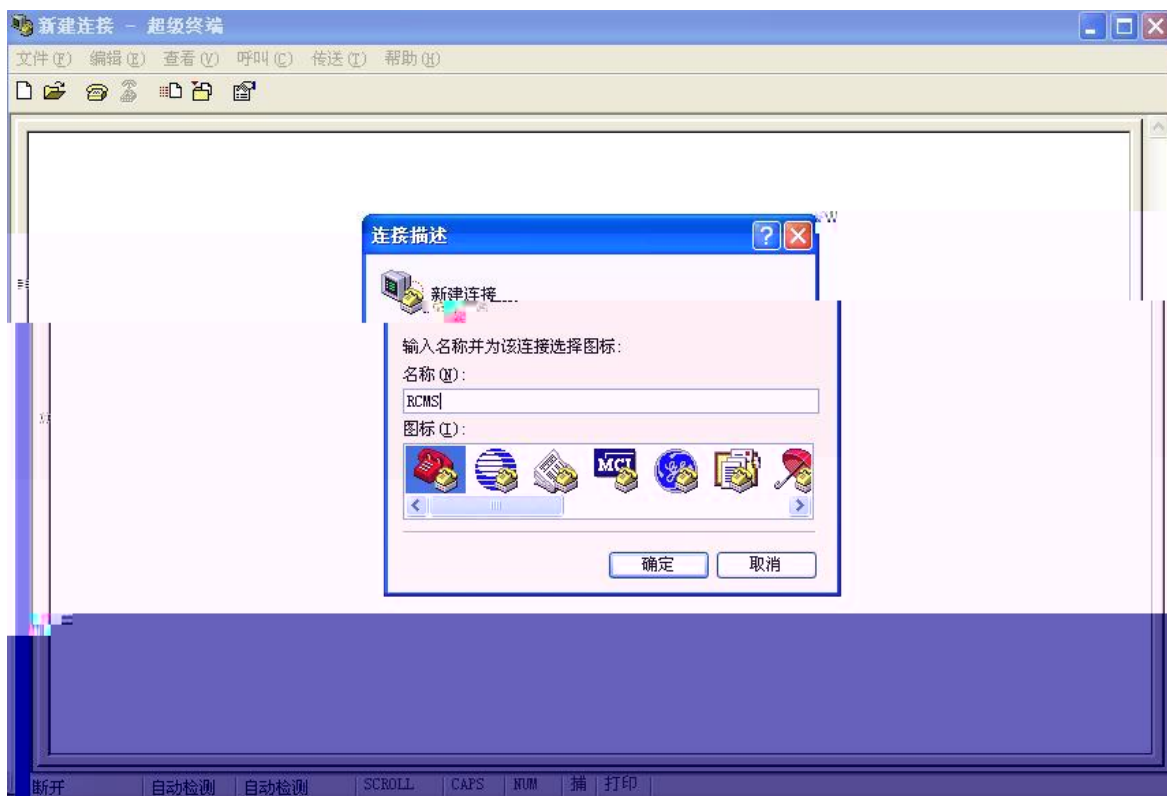




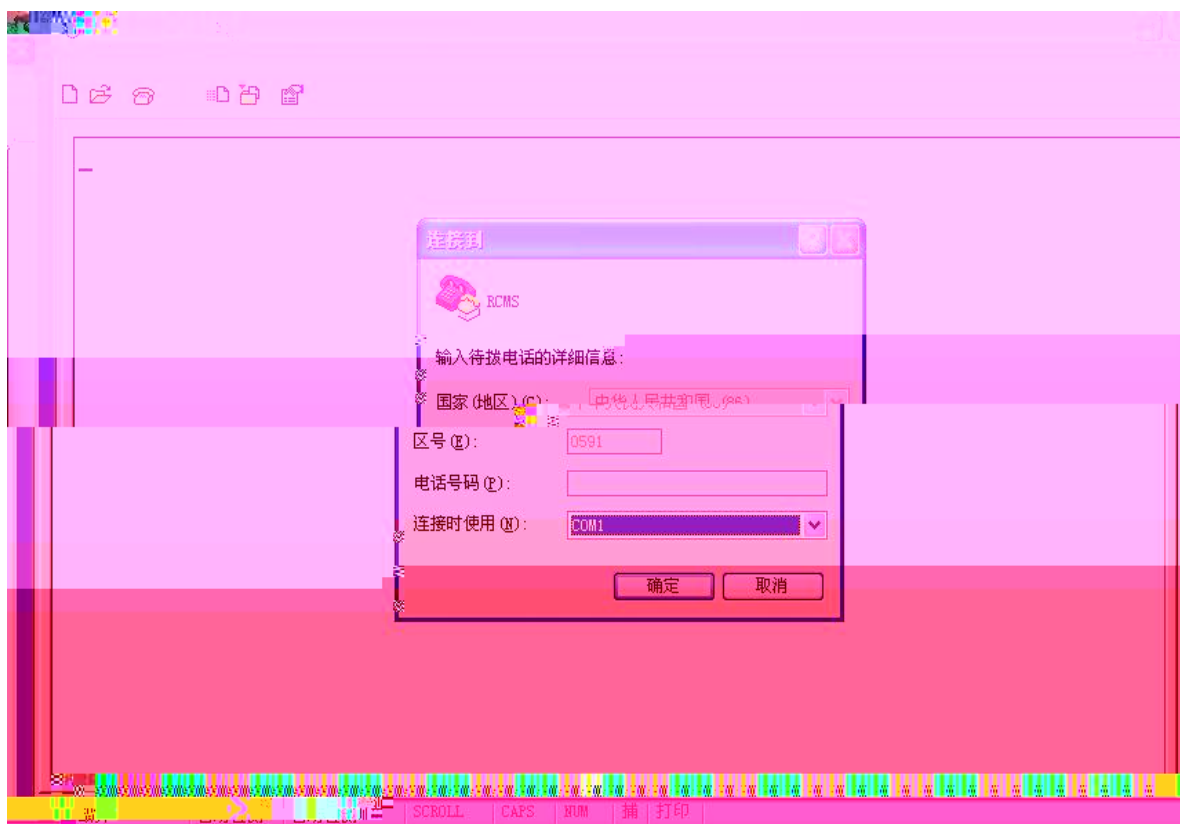
1-3



1-4



1-5



1-6

RCMS

Console

PC

PC

COM1

RCMS

Console

COM1



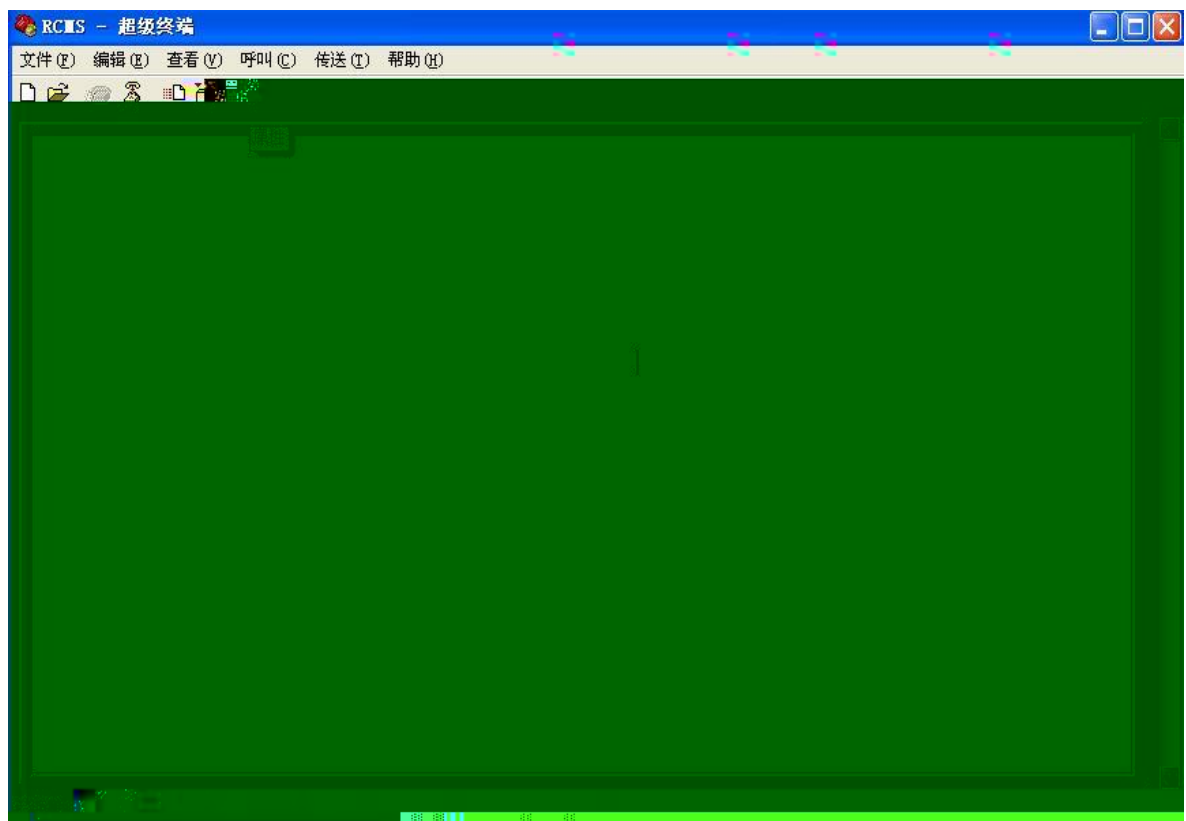
1-7 PC

Console

9600Bit/S

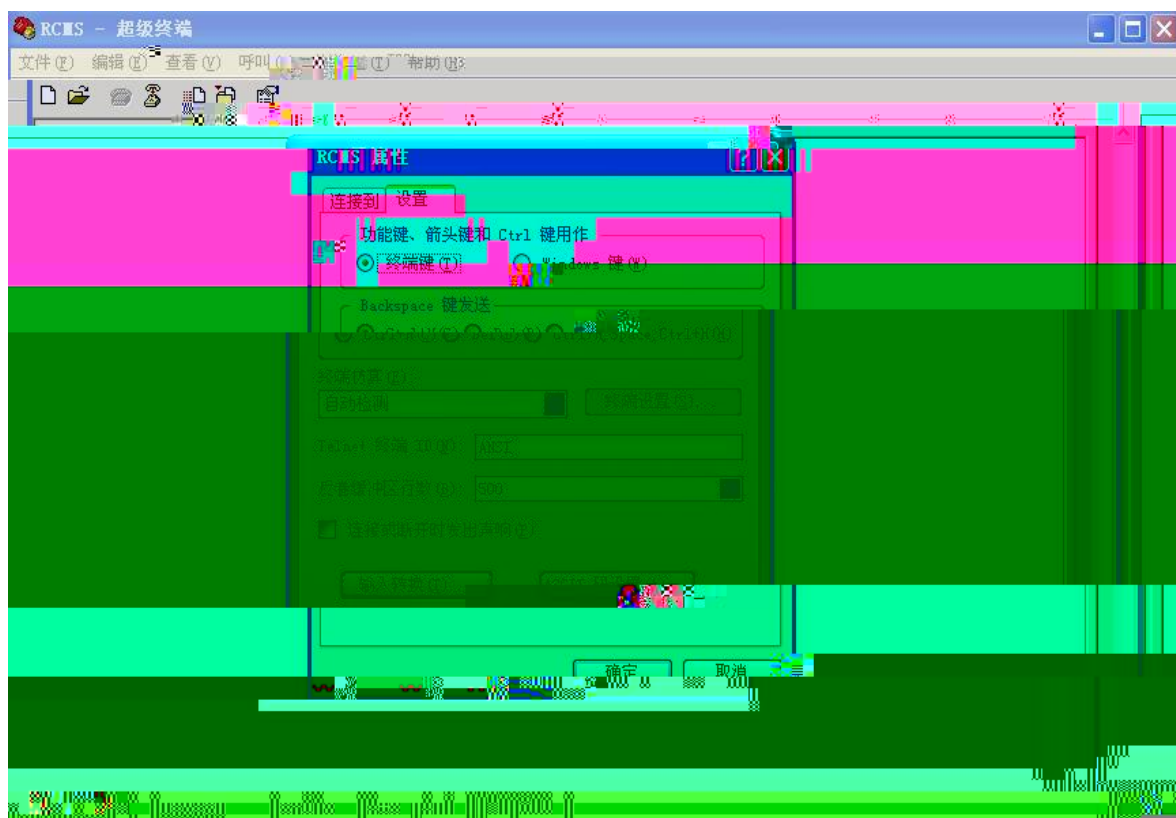
8

1



1-8

com



1-9

ANSI

RCMS

RCMS

1.3 RCMS

1.3.1

RCMS

RCMS

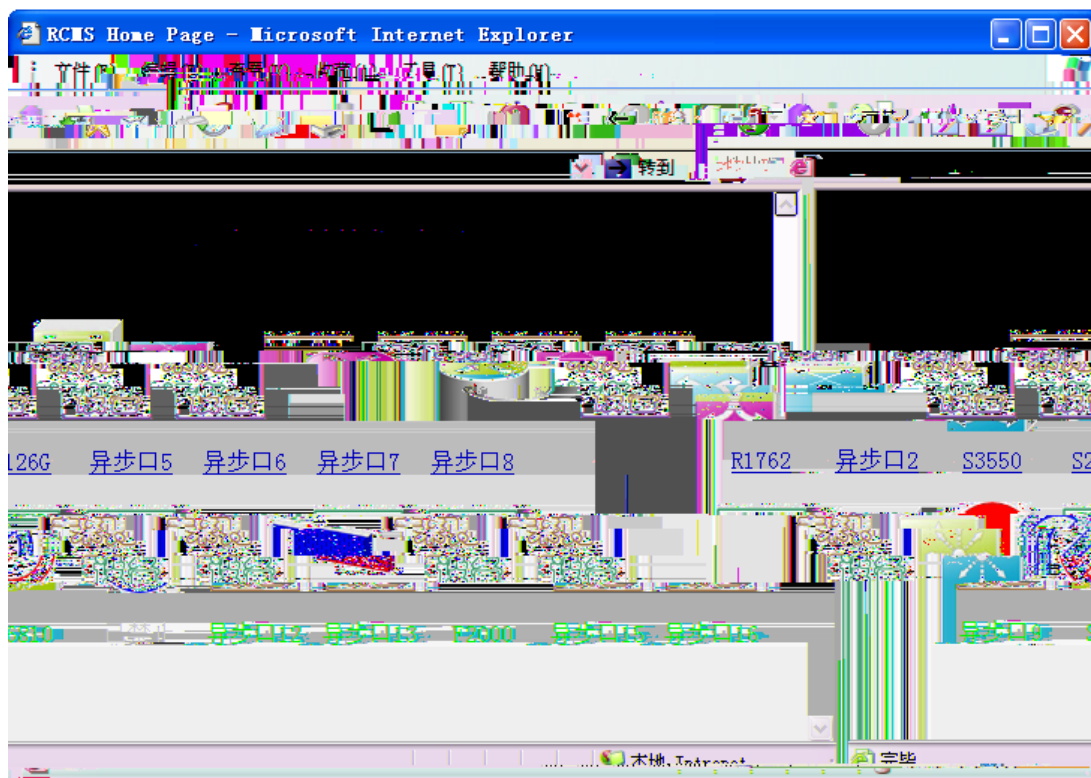
RCMS



RCMS

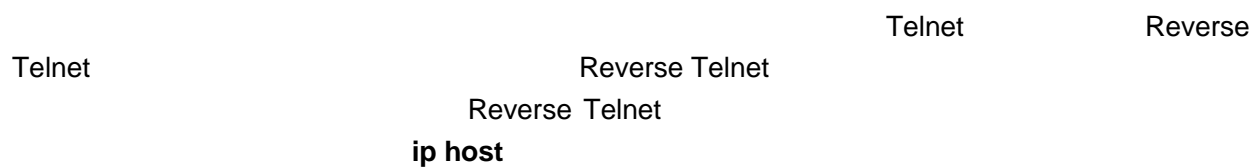
RCMS

1.3.2 RCMS



1 RCMS

RCMS



1.4.2 RCMS

RCMS

banner incoming
HTML

1k
HTML

HTML

1.4.3

RCMS

ip host

Reverse Telnet

IP

RCMS

IP

m

R3660 Reverse Telnet

2013

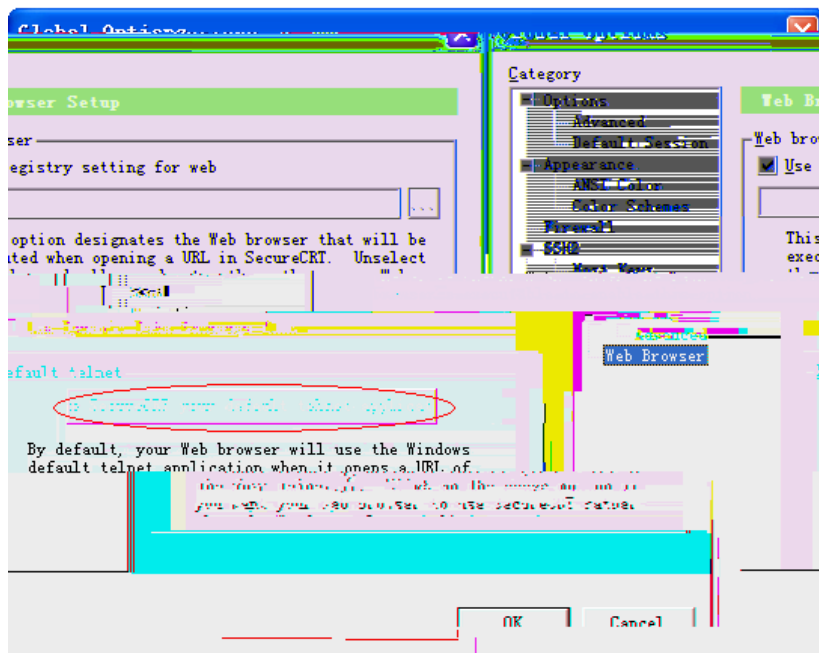
1.4.4

Telnet

Telnet

PC
Options

SecureCRT



3 Telnet

1.5

RCMS

1.5.1

CLI

Red-Giant# execute {{flash:}filename}	
line_rcms_script.text	Reverse

RCMS

IP

192.168.1.1

1 4

RCMS

TTY

login local

AAA

clear line

Reverse Telnet

telnet

Reverse Telnet

enable

password1 ~ password4

delete

reload

y

n

