

RG-S2600S

copyright © 2022





/

2.

1

RG-S2600-S


QOS

■ RG-S2600-S

	10/100Base-T	10/100/1000Base-T	1000Base-X SFP	Console
RG-S2628G-S	24	2	2	1
RG-S2652G-S	48	2	2	1

1.1 RG-S2628G-S

50

	RG-S2628G-S
CPU	500M
BOOTROM	8M
Flash Memory	128M
SDRAM	DDRII 128MB
	Mini-GBIC-SX Mini-GBIC-LX Mini-GBIC-LH40 Mini-GBIC-ZX50 Mini-GBIC-ZX80 Mini-GBIC-ZX100 1000Base-T Mini-GBIC-GT SFP GE-SFP-STACK1.6M 
SFP	1000Base-X 2.5G
	AC 100-240V~ 90-264V~ 50/60Hz 0.5A HVDC 192



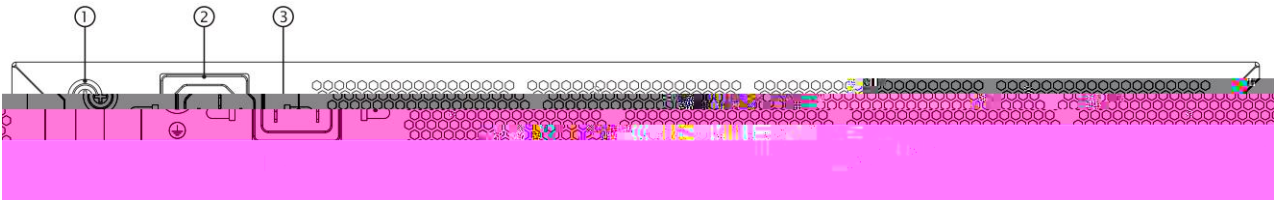
10% ~ 90% RH

- 1
- 2 Console
- 3

RG-S2600S

1	5	10/100/1000Base-T
2 Console	6	1000Base-X SFP /2.5G
3 10/100Base-T	7	10/100/1000Base-T
4 10/100Base-T	8	1000Base-X SFP

1-6 RG-S2652G-S



1	3
2	

RG-S2652G-S

- AC
 - 100-240V~
 - 90-264V~
 - 50/60Hz
 - 0.6A
 - 10A
- HVDC
 - 192-290VDC
 - 0.2A-0.12A

RG-S2652G-S

10cm

3

	Status		

5.2

2

2.1



RG-S2600-S



2.332.331

-
-
-
-

50A351

2.2.1

RG-S2600

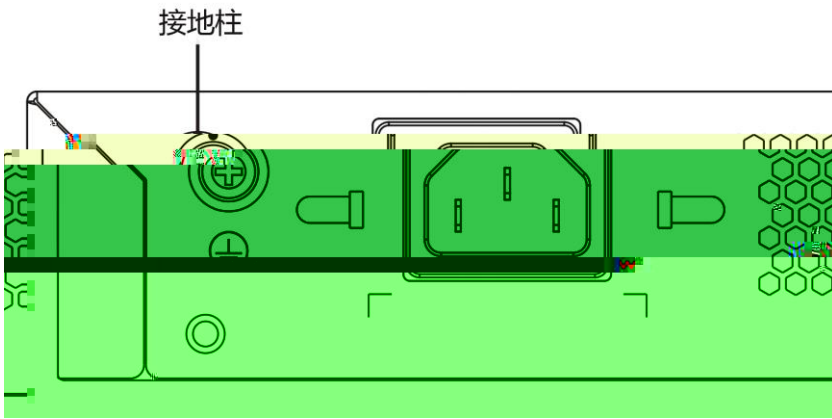


2.2.4

- TN PE
-
-
-

2.2.5

RG-S2600-S



2.2.6



2.2.7 EMI

-
-
-
-

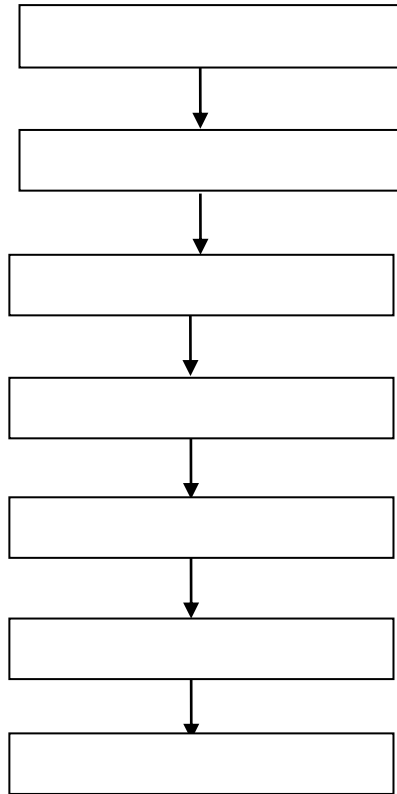
2.4

 RG-S2600-S

3



3.1



3.2

-
-
-
-

3.3 RG-S2600-S

3.3.3

19

- 4
-

3.4

-
-
-
- 10

4

4.1

5

5.1

5.2

RJ45	100	

A

1000BASE-T/100BASE-TX/10BASE-T

1000BASE-T/100BASE-TX/10BASE-T

MDI/MDIX

Crossover

1000BASE-

Switch	Switch	Switch	Switch
1 IRD +	1 OTD +	1 IRD +	OTD +
2 IRD -	2 OTD -	2 IRD -	OTD -
3 OTD +	3 IRD +	3 OTD +	3 IRD +
6 OTD -	6 IRD -	6 OTD -	3 IRD +

A-4

A 4

Switch

Switch

B Mini-GBIC

SFP SFP Mini-GBIC

Mini-GBIC SFP

Mini-GBIC(SFP)	(nm)	(μm)	(MHz/km)		(dbm) MAX	(dbm) MAX	
FE-SFP-LX-MM13 10	1310	62.5/125	N/A	2	-14	-14	
FE-SFP-LH15-SM 1310	1310	9/125	N/A	15			

IEEE802.3

C

- 3.7km 5km 2km
- 3.7km
-
-
-
-