

V1.41

copyright © 2018



<http://www.ruijie.com.cn/>

<http://webchat.ruijie.com.cn>

<http://www.ruijie.com.cn/service.aspx>

7 24

4008-111-000

<http://bbs.ruijie.com.cn/portal.php>

1

RG-AP220-E(C)
802.11n

6

802.11a/b/g

RG-AP220-E(C)

Fat Fit

AP

Fat

AP

Fat

Fit

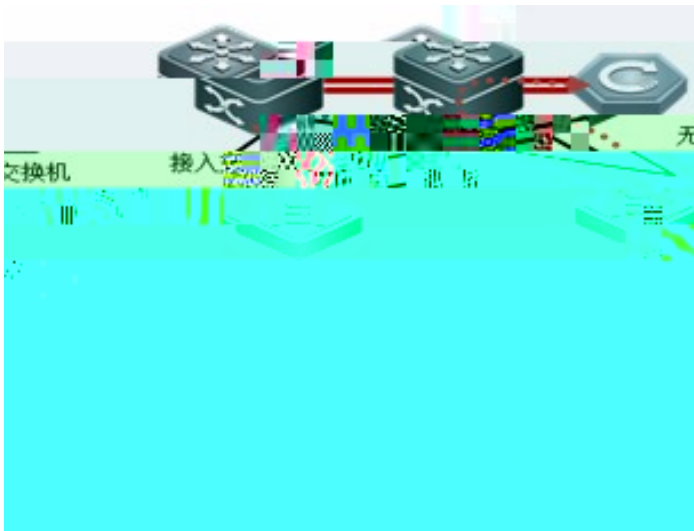
WS

AP

AP

Fit

1-1 RG-AP220-E(C)



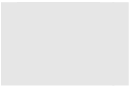
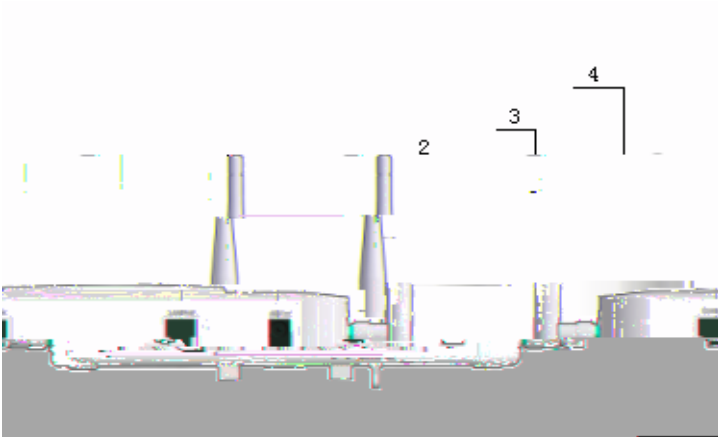
RG-AP220-E(C)
t

POE

		-10	50						
		-40	70						
		5%	95%						
		5%	95%						
		20dbm							
	AP	802.11a	802.11n	802.11a	12	()	5	()	
		802.116	0.48	ref56.46	704.78	0.48	15.66	ref2D6Tj/TT0 1 Tf-0.0 15()Tj/C20.11n	



1-3 RG-AP220-E(C)



RG-AP220-E(C)

10cm

	Status		AP
			AP
			AP
Radio 1	Radio 1		Radio1
			Radio1
			Radio1
Radio 2	Radio 2		Radio2
			Radio2
			Radio2
			link
			1000M link up
			1000M
			10/100M link up

2

2.1

RG-AP220-E(C)

2.1.1

RG-AP220-E(C)

10cm

2.1.2

RG-AP220-E(C)

10°C	45°C	-10°C	50°C	40%	65%	5%	95%

1.5M

0.4M

48

15

2.1.3

RG-AP220-E(C)

(μ m)

0.5

RG-AP220-E(C)

	(mg/m ³)	(mg/m ³)
SO ₂	0.2	1.5
H ₂ S	0.006	0.03
NO ₂	0.04	0.15
NH ₃	0.05	0.15
Cl ₂	0.01	0.3

2.1.4

AP

TN

PE

AP

2.1.5 EMI

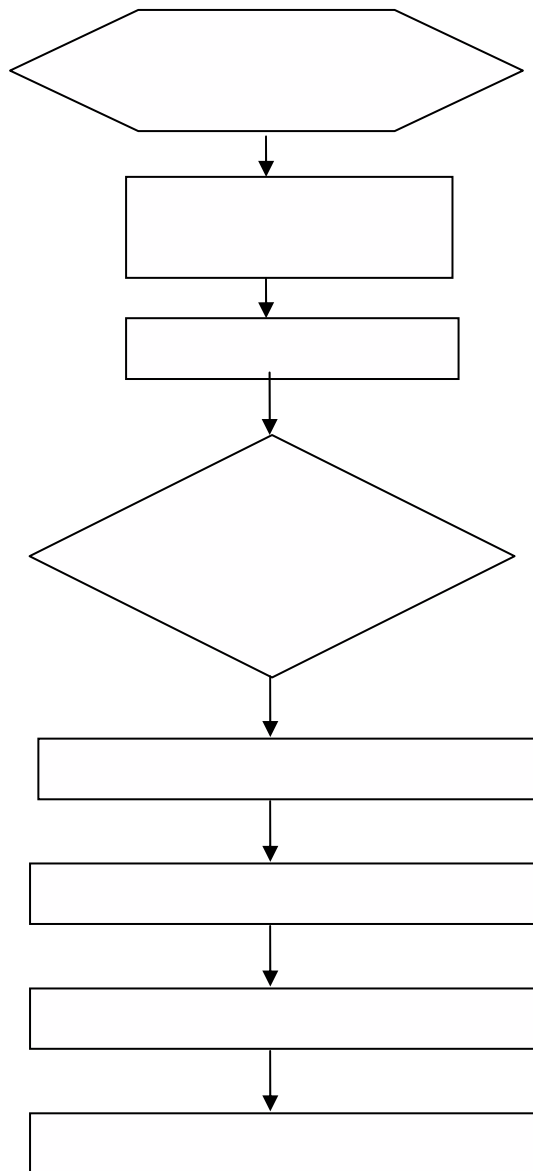
AP

2.2

--	--

3

3.1



3.2

POE

POE

POE

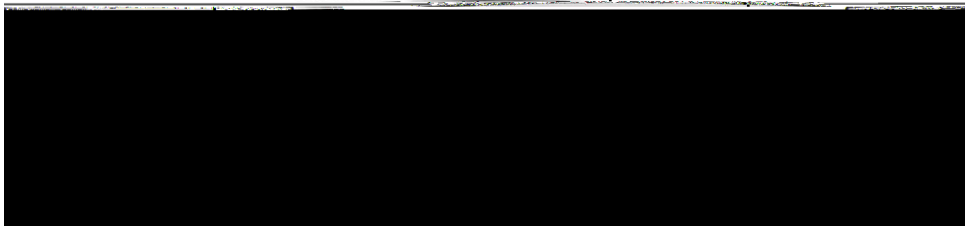
AP

1000M

802.11af 802.11at POE

3-1 RG-AP220-E(C)

以太网口



48V

	100-240V AC 50-60Hz

+48V DC 0.52A MAX 

⚡ AP

3.1 AP

AP

AP

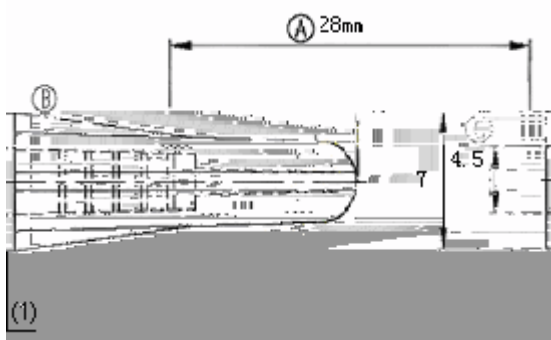
RG-AP220-E(C) V3.02

V3.02

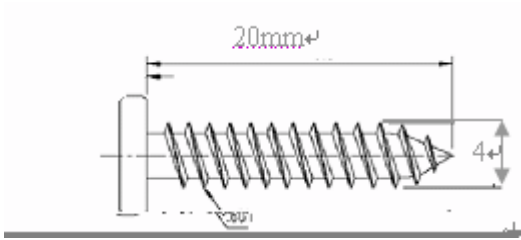
M7x 4.5x28 mm

4*20PABC mm

3-2



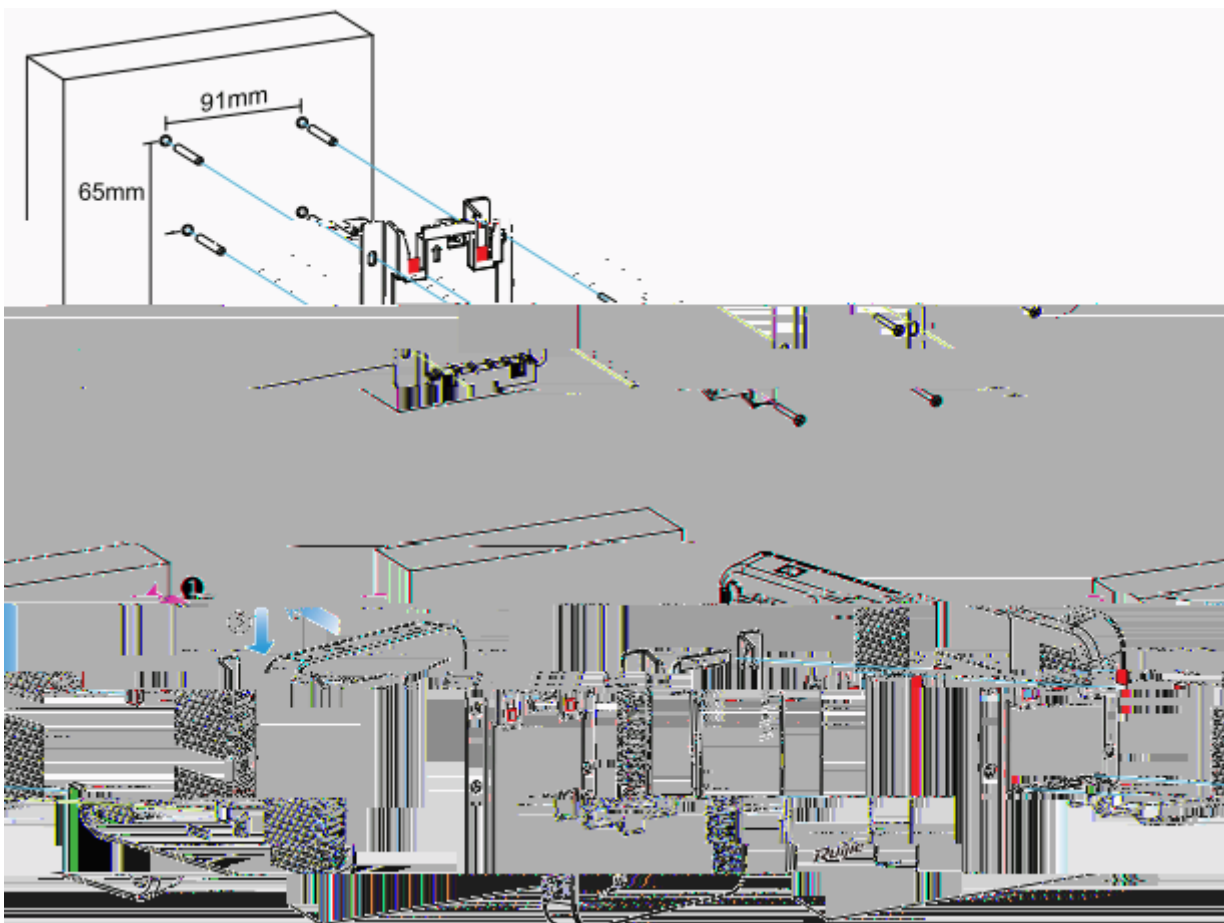
3-3



4 6mm 91 65mm

/

3-4 RG-AP220-E(C)



AP
AP

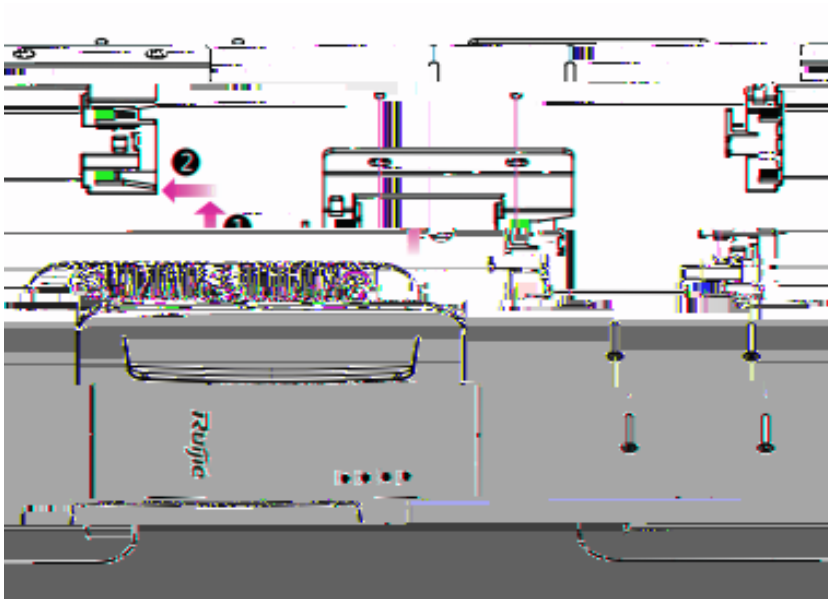
AP

3-4

AP

4 6mm 91 65mm

3-5 RG-AP220-E(C)



AP
AP

AP

3-5

AP

/

AP
RADIO1 RADIO2
1.1

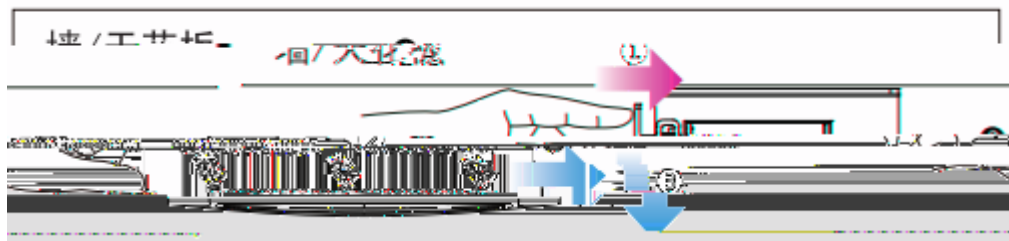
STATUS

Ethernet

AP

AP

3-6 RG-AP220-E(C)



4

4.1

PoE

802.11af

AP

AP

AP

AP