

# RG - AP320- I

V1.09

• Ñ f

copyright © 2018



± • Ñ f

ø W

„Đ Ÿ

ê ± V

” <http://www.ruijie.com.cn/>

” <http://webchat.ruijie.com.cn>

” <http://www.ruijie.com.cn/service.aspx>

” 7× 24 4008-111-000

” <http://bbs.ruijie.com.cn/portal.php>

”

# 1 C | O ”

RG-AP320-I

AP320-I

( X-sense )

AP( Fit AP )

/

AP( Fat AP )

## 1.1 RG-AP320-I

P á ? d

	RG-AP320-I
	1 10/100/1000Base-T PoE
	1 console
	X-sense 65536
	802.11b/g/n 2.4G ~ 2.4835GHz 802.11a/n 5.15G ~ 5.85GHz (
	802.11b: BPSK, QPSK, CCK 802.11a/g/n: BPSK, QPSK, 16-QAM, 64-QAM
	2.4G 802.11b/g/n 20dBm 5G 802.11a/n 20dBm
	1dBm
	11b -99dBm(1Mbps) -93dBm(5.5Mbps) -90dBm(11Mbps) 11a/g -93dBm 6Mbps -85dBm 24Mbps -82dBm 36Mbps -77dBm 54Mbps 11n -92dBm@MCS0 -74dBm@MCS7 -92dBm@MCS8 -73dBm@MCS15
	-10 ~ 55° C -40 ~ 70° C 5% ~ 95% RH 5% ~ 95% RH IP41
	DC 48V PoE 802.3af/802.3at
	EN300 328 EN301 893
EMC	GB9254 GB17618 EN301 489-1 EN301 489-17 EN55022 EN55024 GB4943 EN/IEC 60950-1
Health	EN 62311
	0.7 kg +

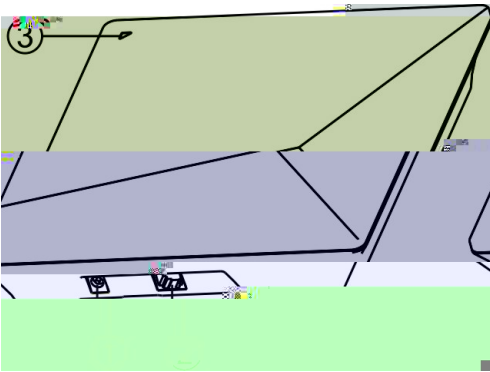
<p>× × mm</p>	<p>205 × 205×42</p>
	<p>10.5W</p>

7 h' Vo ä c 7 h d

C | Ø O

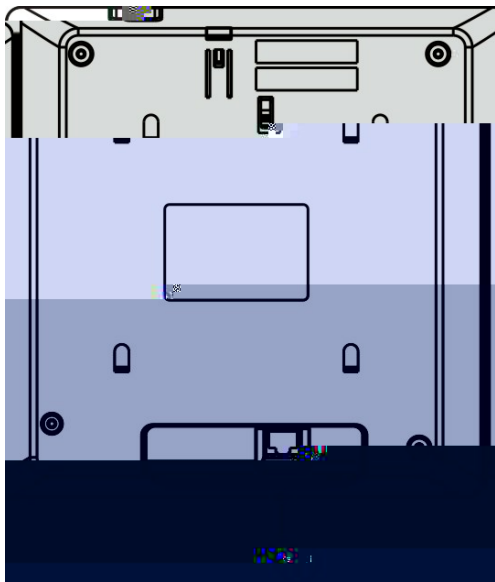
RG-AP320-I    2                    1                    POE                    console

1-1



48V





1000BASE-T/100BASE-TX/10BASE-T

POE

Ô |

RG-AP320-I

POE

} Á vb (" ' ð A • Á v / ' Á v ç A - ó æ \_ ð s d

} POE b (" ' ò l » ^ - ç j n 802.3af/802.3at b ( Ÿ O d

bCã q á

RG-AP320-I

} Á "( 7 " ë } ; • t Á . » - Á w ' d

Ý Ž ì / q f ø

RG-AP320-I

”

5G            RG-AP320-I  
1-4 5G            5G

## 2 G ø é Ô Ô

μ Ž `

---

t ¥ G s ä • • • N d ½ È } m      RG-AP320-I • • • ... g ` ‡ à æ Ù Ð d

» • æ Ù Ð M ¥ g Ñ N ¶ Ÿ { £ ¢ Æ ã d

---

### 2.2 G μ

”

AP

”

500m

”

”

## 2.5 G<sup>a</sup>©éL -

RG-AP320-I

### 2.5.1 GL -

”

”

RG-AP320-I

”

RG-AP320-I

### 2.5.2 ù•L -

RG-AP320-I

### 2.5.3 t...xy...L -

RG-AP320-I

H <sub>2</sub> S	0.006	0.03
NO <sub>2</sub>	0.04	0.15
NH <sub>3</sub>	0.05	0.15
Cl <sub>2</sub>	0.01	0.3

### 2.5.5 Ô | L -

” DC36-57V  
 ” POE 802.3af/802.3at POE

Û & Ñ ë Ö ü o , Ä → • È Û ( W Ñ dRG-AP320-I Û & Ñ ë Ö 12.95W d

Á v b ( “ \* Ý L DC 48V Ñ Û { ( Ö 0.3A Á v d

a POE Ñ & v i ð < ¶ , Ñ & v d

### 2.5.6 EMI L -

”  
 ”

### 2.6 G V ĵ


RG-AP320-I ••â Û ] ng ] n ‘ ‘ • y • d

### 2.7 • c - “

“ ϕ oC -

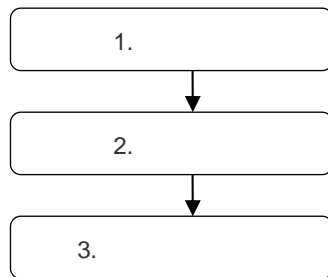
--	--

### 3 C | é G

RG-AP320-I AP

È ò ½, < • ... g ` • Ñ • - • Ñ N í ' Đ, < p d

#### 3.1 G W 8



#### 3.2 G ø é \

RG-AP320-I

”  
”  
”  
”  
”  
”  
”  
”

#### 3.3 G • é μ | ç 6 •

AP

”  
”  
”  
”

”  
”  
”  
”  
”  
”  
”  
”  
”

### 3.4 G 2

---

È •\*”ÿ-õ} "Õ7 Ö °´ mVod

}É•,B/ kD m ÿ-õ} "Õ7Ö £‹ m ÿ-õ} "Õ7 È •\*”kD md

---

”

4 6mm

61mm

3-1

z

3-2

**a** }Vo•&‹• È• mÚ ¬d

---

z

3-3

---

**a** RG-AP320-I ‹ [Vo Q°¿ md}Vo}m&‹“ ¶TI ¬ã¬ ¬ãÜVo4 Q°¿  
md

**a** m“ j a,‹h mýÄ°¿!NÈ%dÈ\_° rOœûÜVoÈ&‹ÈÄ•d

**a** mû È•...¿ Vo¼î„•% »G •%•NV09ëd

---

”

z 4 6mm 61mm

3-4

z

### 3.5 GT ò 6

3-1

---

a • Æ ¶ 9 { M + d

---

z

3-2

---

a } V o • & < ^ • È • m Ú - d

---

z

3-3

---

¶ TI ' ' û ò G ¼ î ' m ½ Md

½ M '•d

---

### 3.6 ² ý 2

3-4

z

3-5

z

3-6

### 3.7 Ž š ä /

ä / é ^ L ±

AP LAN/POE AP A

**a** Vo console Ç o Ĩ < Ñ 9600 c ô l \* 8 e Ý Î r M ´ \* 1 h Å % M d ' } s AP ) û  
 Í N " ° d

**a** ë ¥ G } È % ì x Ñ õ x d

**a** RG-AP320-I â Ù Đ ð g l È Š ñ ð + ñ â ñ RG-AP320-I ñ m d

### 3.8 × Ô §

l ç 6 •

”

”

”

x é ^ L ±

LAN/POE

z

z

### 3.9 G d é ó Ó

² ó Ó

”

”

”

”

Ž š ä / ó Ó

”

”

Ô | ó Ó

”

”

AP

## 4 x ž • p

### 4.1 @ Ž ' ° Ê

POE AP

@ Ž ' ° Ê

” POE AP

” AP AC

” PC AP PC POE

### 4.2 Ô n

Ô ø é ó Ó

”

” AP

Ô d é ó Ó c 1 d

” AP AC

” AP

## 5 ñ 0 ç õ

### 5.1 ñ 0 x

Ce

RG-AP320-I

```

"      AP
"      AP                      Link down
"      AP                      CAPWAP
"      AP
"      AP          CAPWAP
"      16      /min AP          CAPWAP
"      AP
"      2      2      AP          AP
"      AP      /
    
```

### CLI w W

RG-AP320-I AC

```

RG-AP320-I [Y Q d ¶ » » Telnet ° ´ Ä þ RG-AP320-I h 1 ¶ ´ R 5 ³ Å a — Y Q
RG-AP320-I d
    
```

### 5.2 â 8 ç õ

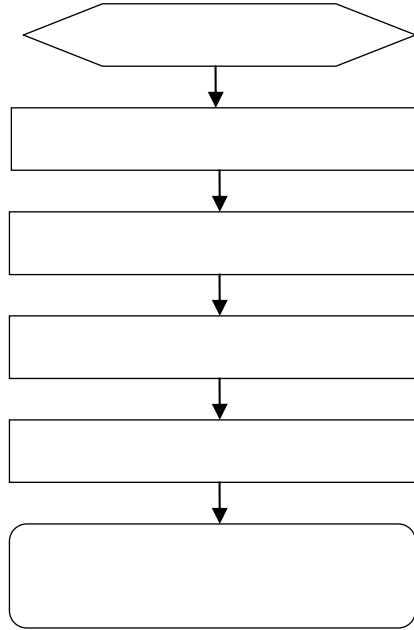
```

"      AP      AP          AP
"      AP      AP          AC
    
```

### 5.3 ] ç õ

## 6 G é n N \ m Ó Â

### 6.1 G \ m - Ó ù Ð W 8



### 6.2 n N \ m Ó Â

0758>JTJ005 C /P < 0 Td/P <8.D03E /P <<POE0.0007 T0j EMC /P <2.367075C0B6A21372E491C0

z AP

z AP

Ce G • N € ø IC.

,

\ çA ä / — x ä / O ” y f

1000BASE-T/100BASE-TX/10BASE-T O L

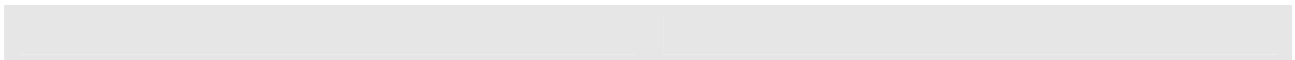
1000BASE-T/100BASE-TX/10BASE-T

MDI/MDIX Crossover

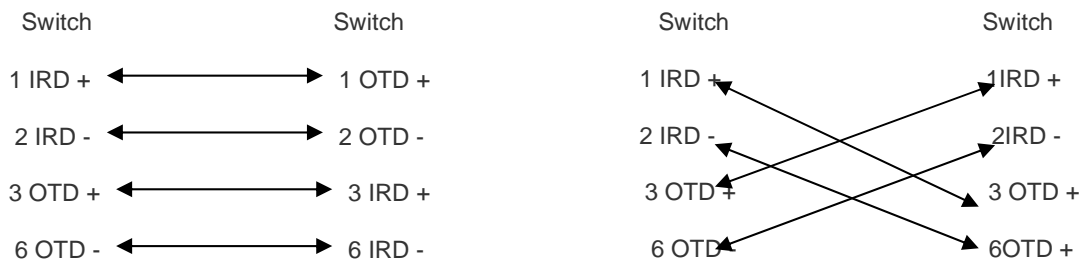
1000BASE-T	IEEE 802.3ab	100-ohm 5	5	UTP	STP
	100				

1000BASE-T	4	4	1000BASE-T
------------	---	---	------------

A-1 1000BASE-T



Switch	Switch	Switch	Switch
1 TP0 +	1 TP0 +	1 TP0 +	1 TP0 +
2 TP0 -	2 TP0 -	2 TP0 -	2 TP0 -
3 TP1 +	3 TP1 +		



# \ø} G é a Ž 1

RG-AP320-I

Ô § £ 3 œ • « é L -

”		5	
”	7		
”		7	10
”	SFP+	5	10

Ô § x • é l ě 6 •

”			
”		D-1	
D-1			

” 30mm

”			
”			
”			
”			
”		D-2	

D-2

”

