

# RG-ULB111

V1.0

copyright © 2019





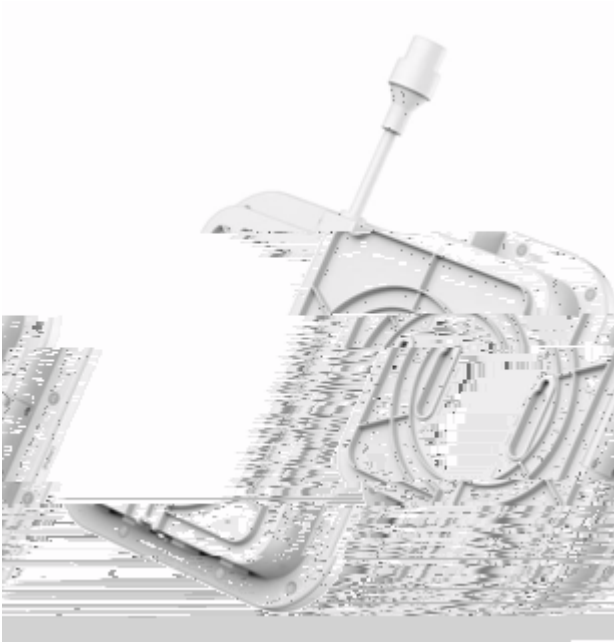


	< -41.3dBm/MHz
	-92dBm/500MHz@6.8Mbps

### 1.2.1.1 RG-ULB111

RG-ULB111 1

1-1 RG-ULB111



### 1.2.1.2 RG-ULB111

RG-ULB111

logo

1-1 LED

-		
	1	
	5	down

## 2

### 2.1

RG-ULB111

### 2.2

500m

IP65

30cm

### 2.3

-20 70

-40 +85

0% 100%

### 2.4

„ >

G °Ôi0Đ p i°Ôi0Đ pđ ! ãđÀYG \$¼€ H m-½Áñ / h Ù ù À

NH

### 3



#### 3.1



#### 3.2

## **3.3**

### **3.3.1**

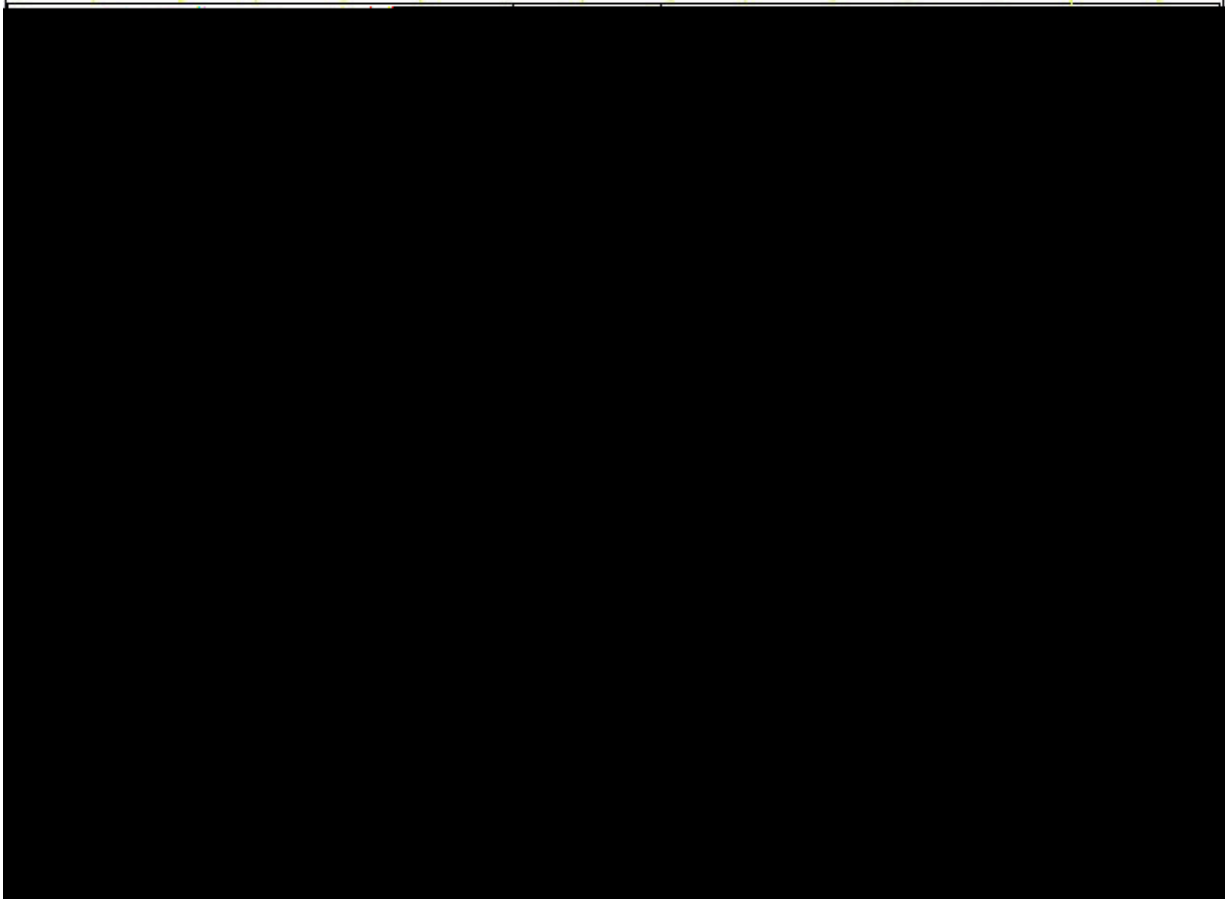
1.

2.

3.

4.

3-1

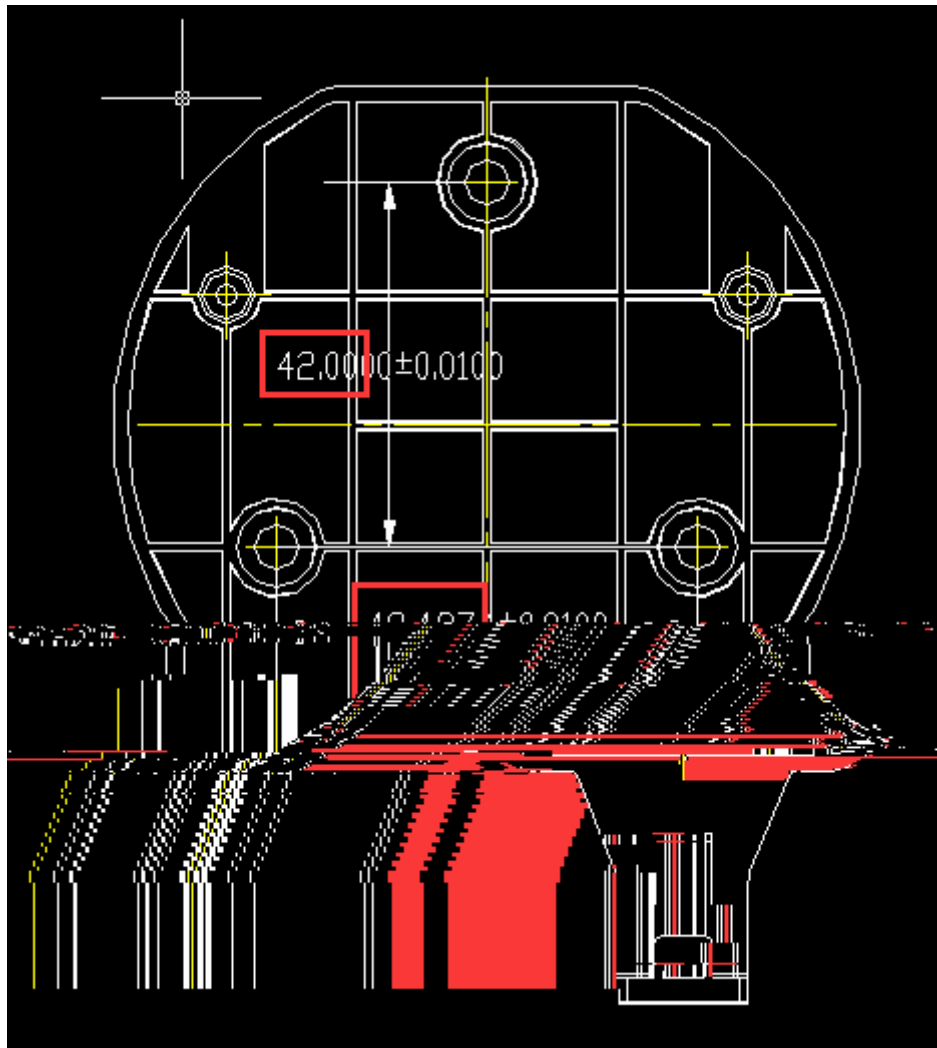


3  
42mm

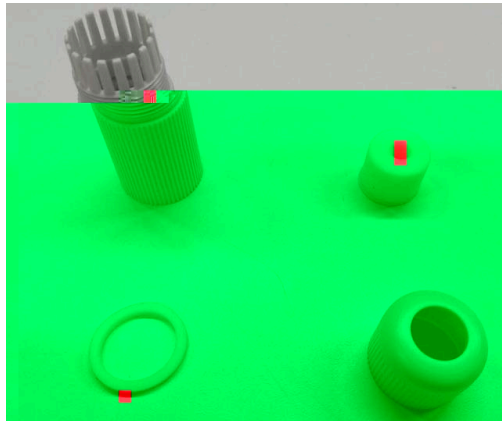
6mm

48.5mm

3-2



3-4



3-5

RJ45  
RJ45

3-6

3-7

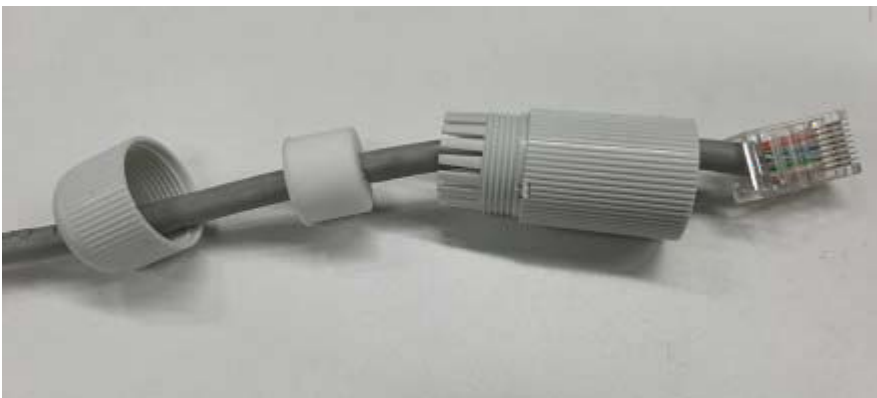
( 2

1 3 1 4 3 5 3 ) 3-8

3-5



3-6





3-8



## 4

### 4.1

PoE      RG-ULB111

### 4.2

#### 4.2.1

PoE      RG-ULB111

#### 4.2.2

# 5

## 5.1

	—	link
	—	
1s	—	
5s	—	

## 5.2

RG-ULB111

## 5.3

RG-ULB111

1)

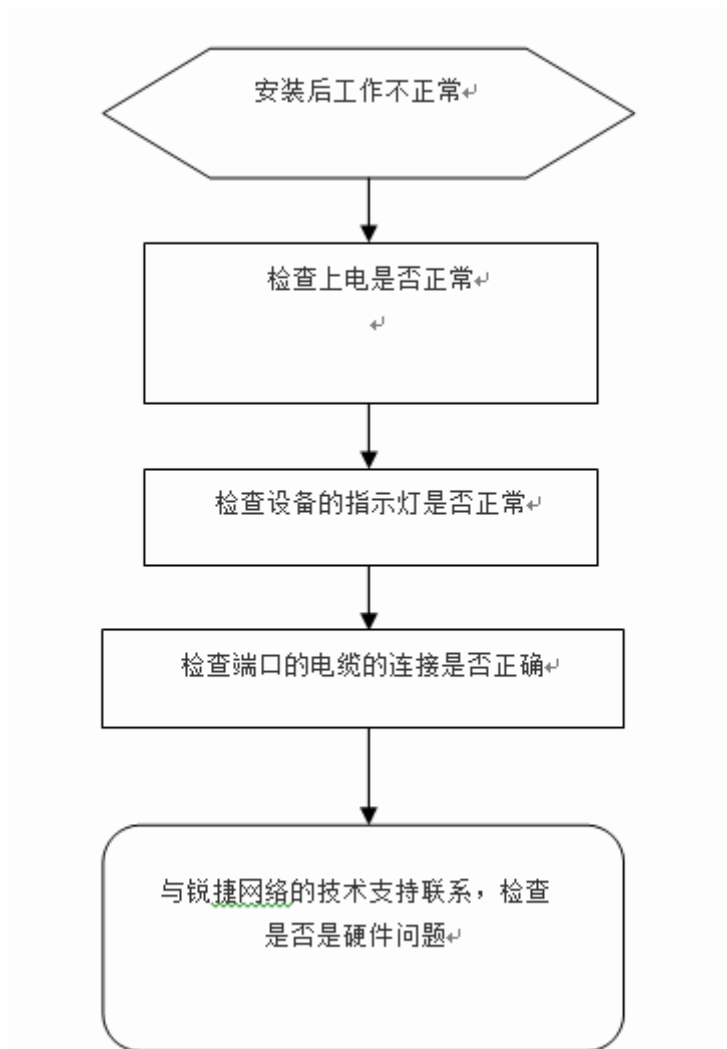
2)

3)



# 6

## 6.1



## 6.2

1

2