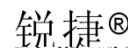




©2013-2022







# 1

RG-WALL 1600-S3700 V2.0

IPSec SSL VPN  
IPv4 IPv6

NAC SSL

Web

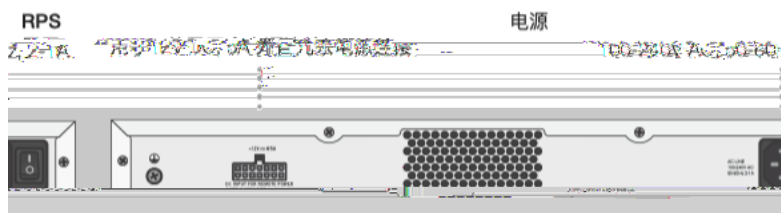
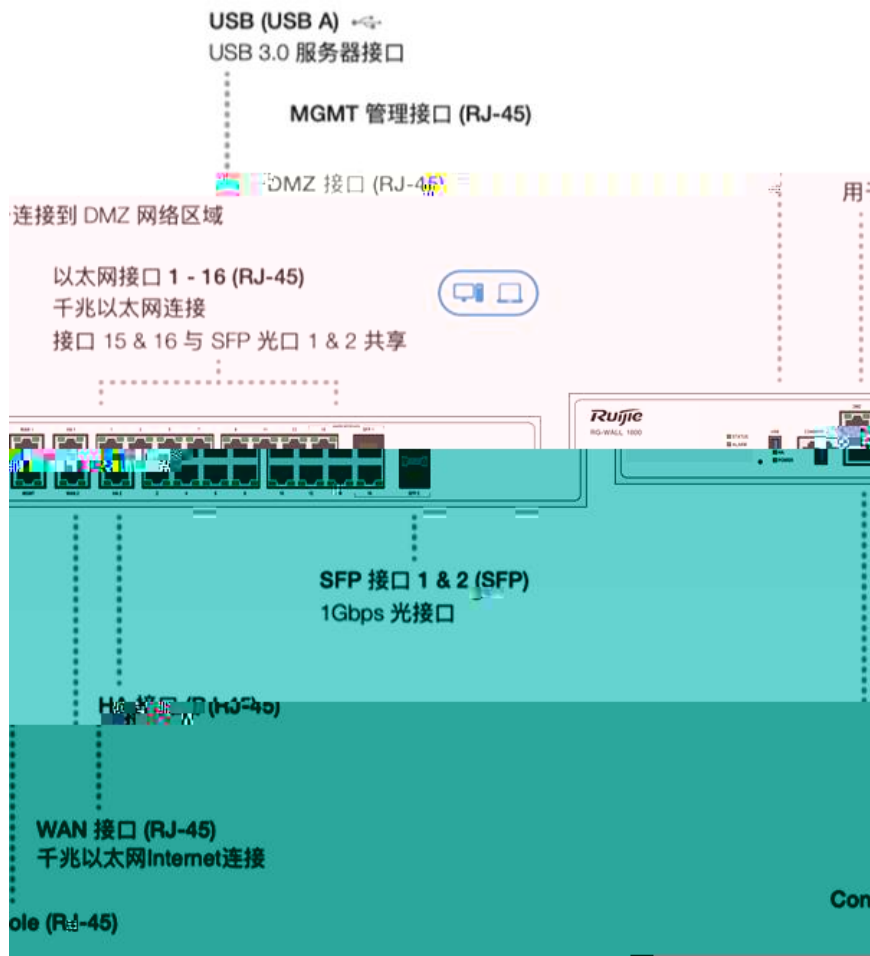
RG-WALL 1600-S3700 V2.0

RG-WALL 1600-S3700 V2.0

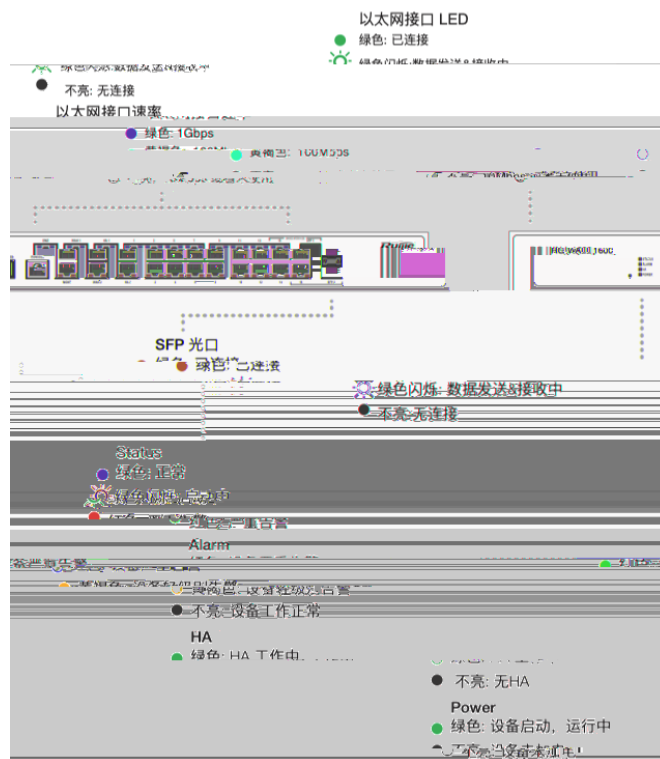
## 1.1 RG-WALL 1600-S3700 V2.0

	RG-WALL 1600-S3700 V2.0
	0 to 40°

RG-WALL 1600-S3700 V2.0



RG-WALL 1600-S3700 V2.0 LED





1~10

3.8

---

### 2.1.5

RG-WALL 1600-S3700 V2.0

---

## 2.2

RG-WALL 1600-S3700 V2.0

### 2.2.1

RG-WALL 1600-S3700 V2.0

RG-WALL 1600-S3700 V2.0

RG-WALL 1600-S3700 V2.0

### 2.2.2

RG-WALL 1600-S3700 V2.0

2-2 2-3

3.8cm

2-1 RG-WALL 1600-S3700 V2.0



### 2.2.3

RG-WALL 1600-S3700 V2.0

RG-WALL 1600-S3700 V2.0

0°C-40°C		20%-90%	
		1.5M	0.4M

### 2.2.4

$\mu\text{m}$	0.5	1	3	5
/	1.4 x 10	7 x 10	2.4 x 10	1.3 x 10

RG-WALL 1600-S3700 V2.0

	$\text{mg}/\text{m}^3$	$\text{mg}/\text{m}^3$
	0.2	1.5
	0.006	0.03
	0.04	0.15
	0.05	0.15
	0.01	0.3

### 2.2.5

RG-WALL 1600-S3700 V2.0

RG-WALL 1600-S3700 V2.0

100-240 VAC, 47-63 Hz

### 2.2.6

RG-WALL 1600-S3700 V2.0

### 2.2.7 EMI

## 2.3

## 2.4

---


---

RG-WALL 1600-S3700 V2.0

---

## 2.5

---

	2	USB	2	Console	8	4
		2 SFP				

---

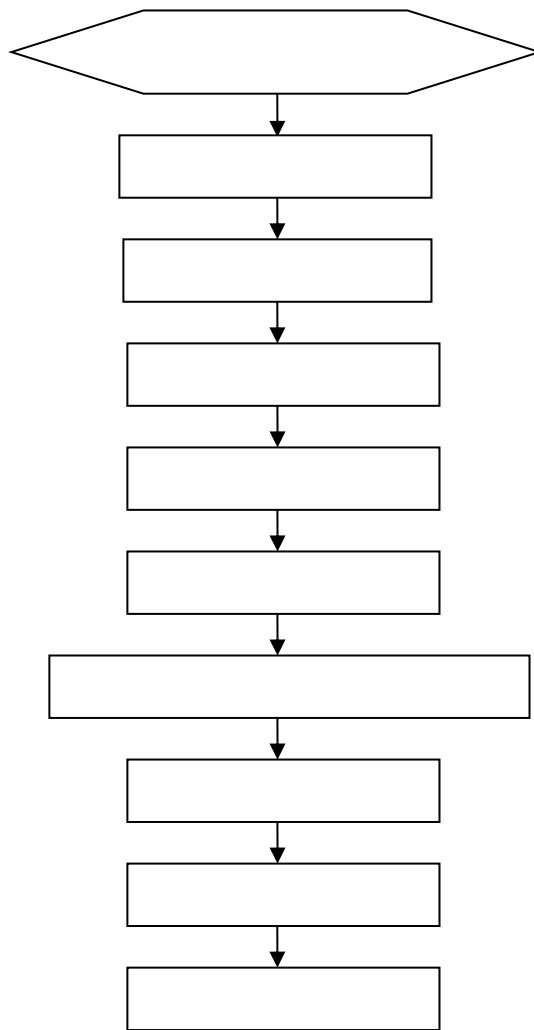
### 3

RG-WALL 1600-S3700 V2.0

---

---

#### 3.1



#### 3.2

RG-WALL 1600-S3700 V2.0



RG-WALL 1600-S3700 V2.0  
S3700 V2.0

RG-WALL 1600-

---

### 3.4

RG-WALL 1600-S3700 V2.0

10mm

- 1) RG-WALL 1600-S3700 V2.0
- 2) RG-WALL 1600-S3700 V2.0
- 3) RG-WALL 1600-S3700 V2.0 RG-WALL 1600-S3700 V2.0

### 3.5

16A

- 1)
- 2)

---

3

1.5

14AWG

---

### 3.6

1) RJ45 RJ45

RJ45

2)

3)

RJ45

4)

### 3.7

3) 3-7

- 1.
- 2. SFP
- 3.
- 4. SFP  
SFP

- 5. 3-7
- 6.

---

SFP

SFP

---

### 3.10

---

---

SFP

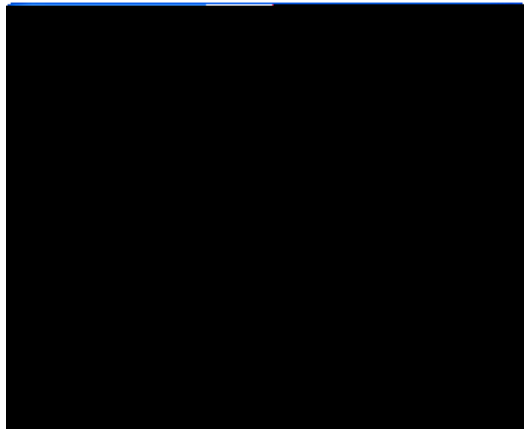
1)

I



4) “ ”.

4-3

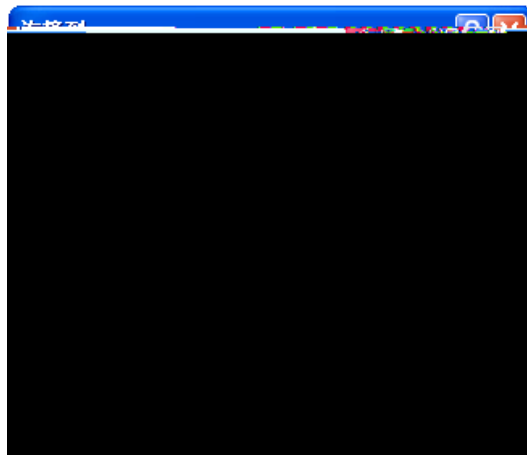


4-2

5)

< >

4-4



4-3

6) .

8

< >

1

4-5

9600



4-4





## 4.2





# A

1000BASE-T/100BASE-TX/10BASE-T

MDI/MDIX Crossover

1000BASE-T

IEEE 802.3ab

100-ohm 5

5

UTP

STP

A 4



# B

RG-WALL 1600-S3700 V2.0

19

7

5

7

10

SFP+

5

10

25

20

10

ñ

†

ñ



mm	mm
10	80~150
10~30	150~200
30	200~300