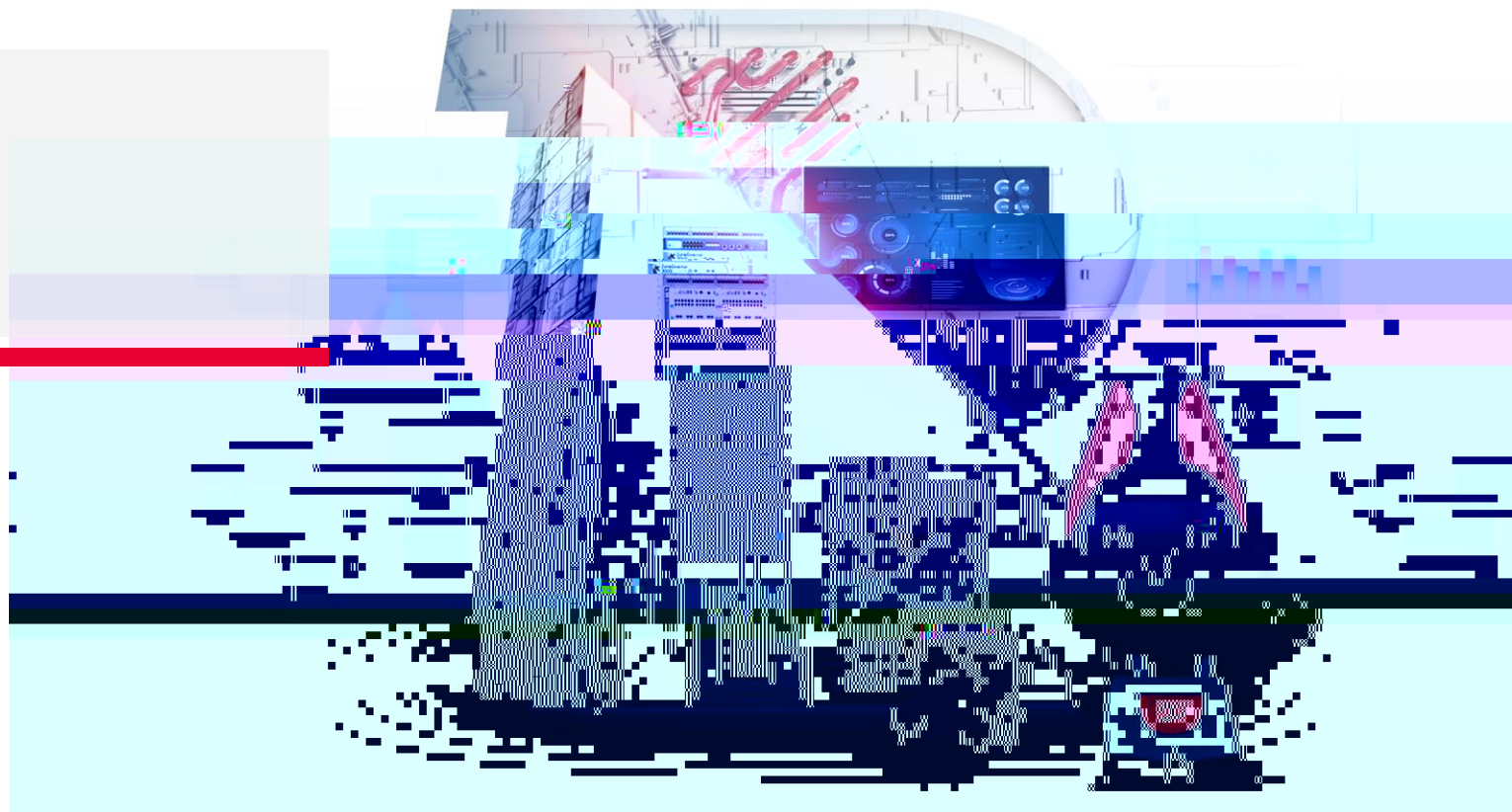
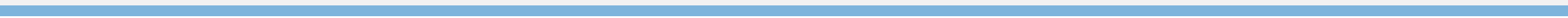
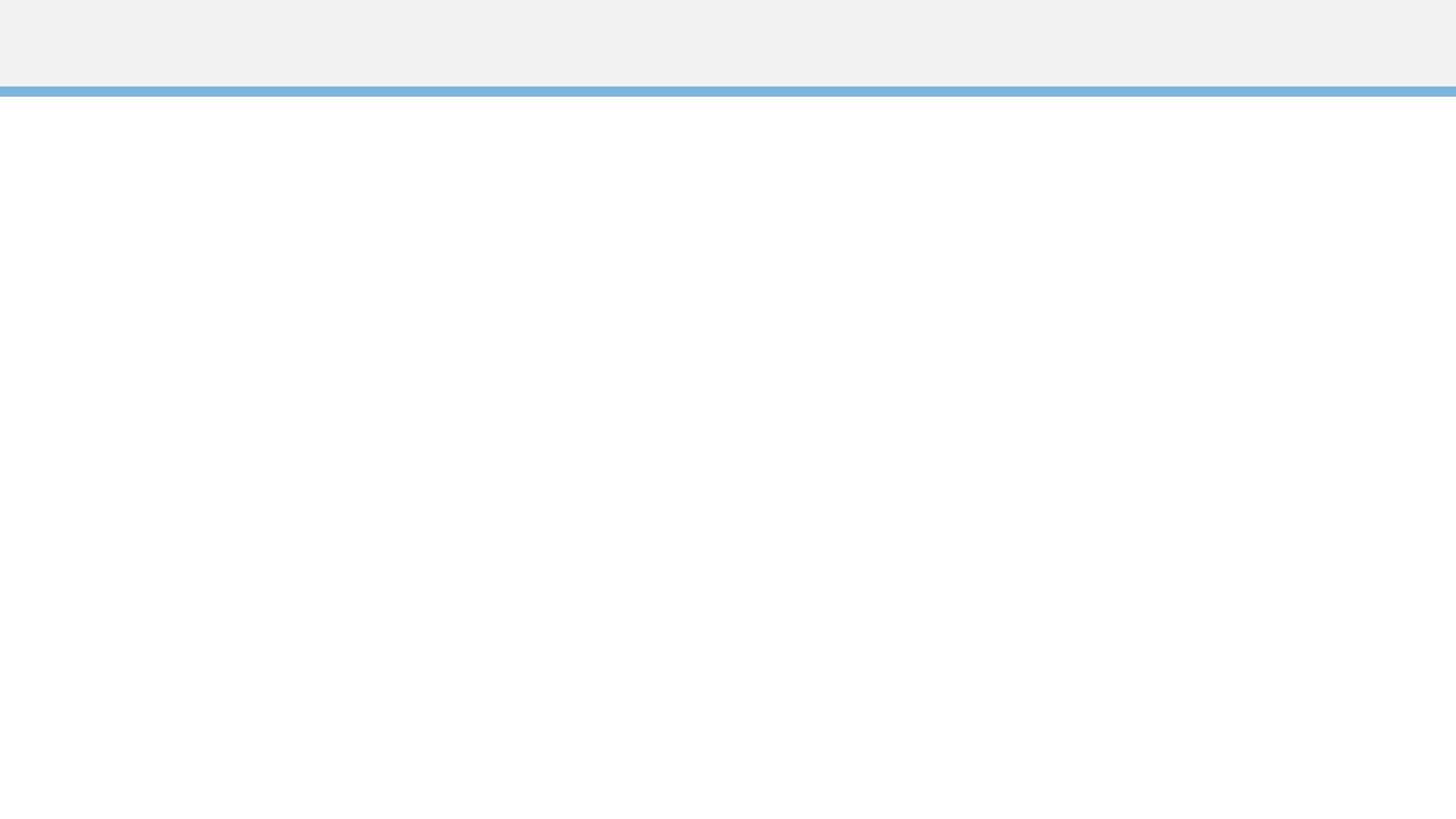
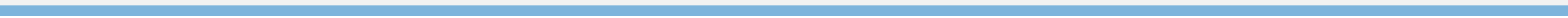


R -EG5200-P



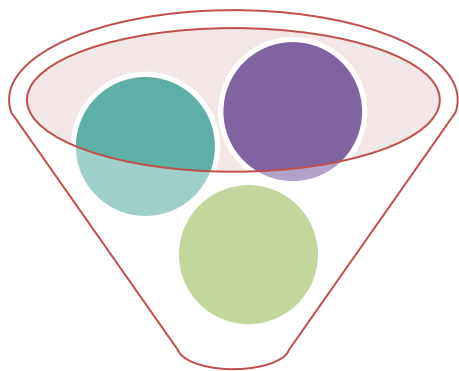




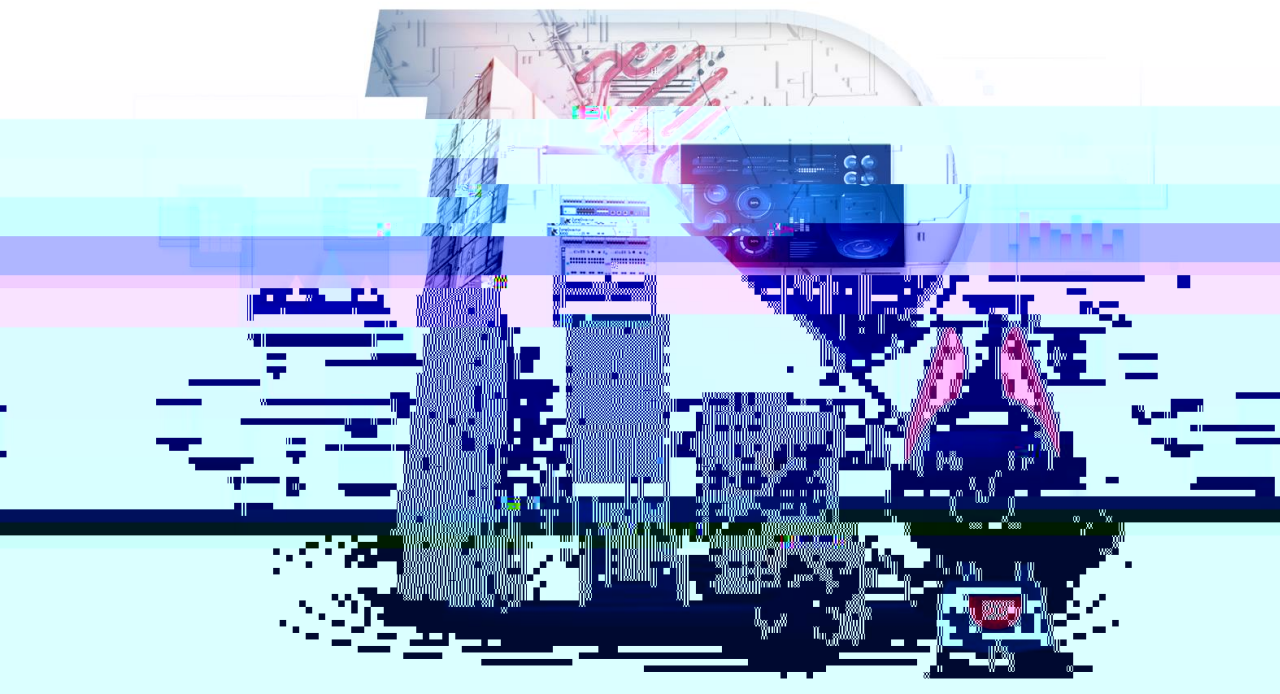


ALL IN ONE





	RG-EG5200-P	
CPU	88F3720 1.0G 2 A53	
	DDR4 2GB	
	10 +2 (8 POE	
	26	
	24	3-9 16GE
1	16GE	
2	2.5	4G
POE	8	150W
	4GB EMMC/ /TF	
	440*300*44mm	



- 1.
- 2.
- 3.



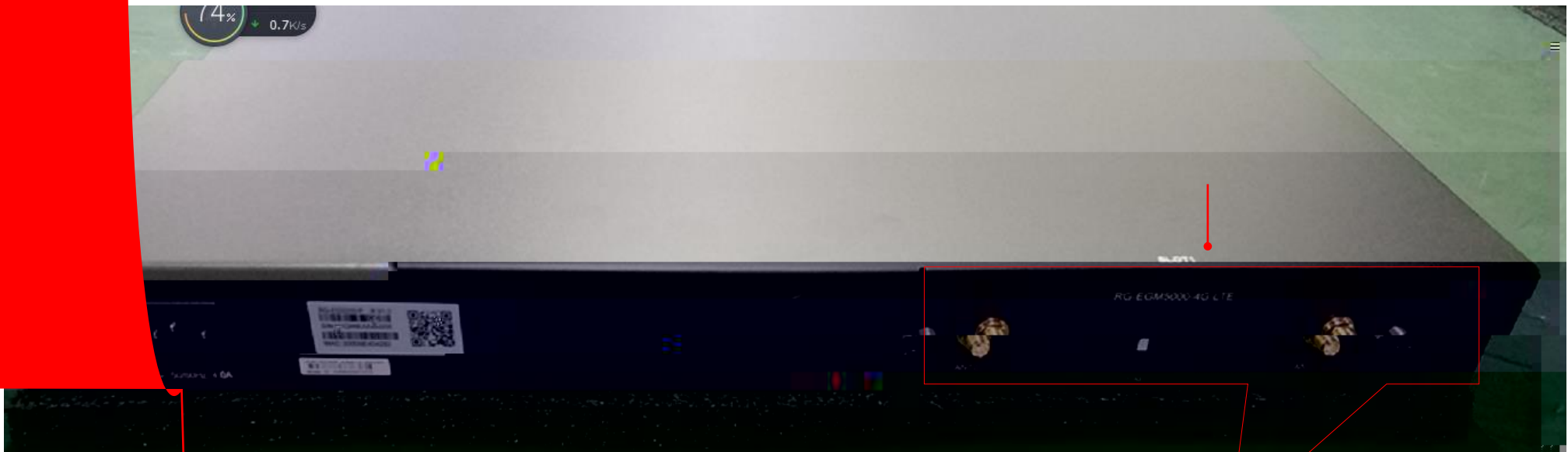
0/3~0/9
12-27

0/0 0/1

WAN 0/2
0/10 0/11
16GE

LAN MGMT
WAN

GE 0/2



1 AC

RG-EGM5000-4G-LTE
RG-EGM5000-HDD-1T 4G

RG-EGM5000-16GE		
RG-EGM5000-4G-LTE		
RG-EGM5000-HDD-1T		

EGM5000-16GE



EGM5000-4G-LTE



EGM5000-HDD-1T





16

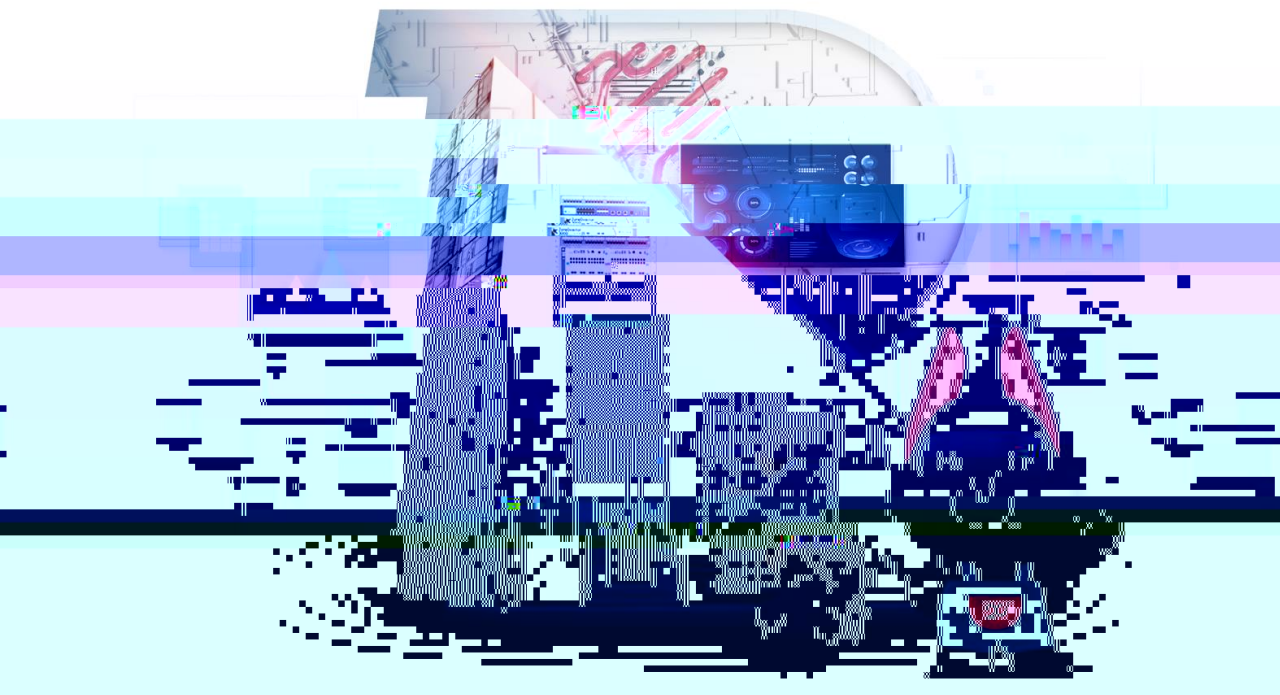
```
Ruijie#show swi
Ruijie#show switch-info
PORT0   WAN0   0 1  Gi0/0  0
PORT1   WAN1   0 0  Gi0/1  1
PORT2   LAN0   0-1  Gi0/2  2
PORT3   LAN1   0-1  Gi0/3  3
PORT4   LAN2   0-1  Gi0/4  4
PORT5   LAN3   0-1  Gi0/5  5
PORT6   LAN4   0-1  Gi0/6  6
PORT7   LAN5   0-1  Gi0/7  7
PORT8   LAN6   0-1  Gi0/8  8
PORT9   LAN7   0-1  Gi0/9  9
PORT10  LAN8   0-1  Gi0/10 10
PORT11  LAN9   0-1  Gi0/11 11
PORT12  LAN10  0-1  Gi0/12 12
PORT13  LAN11  0-1  Gi0/13 13
PORT14  LAN12  0-1  Gi0/14 14
PORT15  LAN13  0-1  Gi0/15 15
PORT16  LAN14  0-1  Gi0/16 16
PORT17  LAN15  0-1  Gi0/17 17
PORT18  LAN16  0-1  Gi0/18 18
PORT19  LAN17  0-1  Gi0/19 19
PORT20  LAN18  0-1  Gi0/20 20
PORT21  LAN19  0-1  Gi0/21 21
PORT22  LAN20  0-1  Gi0/22 22
PORT23  LAN21  0-1  Gi0/23 23
PORT24  LAN22  0-1  Gi0/24 24
PORT25  LAN23  0-1  Gi0/25 25
PORT26  LAN24  0-1  Gi0/26 26
PORT27  LAN25  0-1  Gi0/27 27
```

对应16GE交换卡0-15口



1 RG-EGM5000-4G-LTE
2

ã 6 Ye `T ¿A/ 1E „9H I C a%-P- @



- 1.
- 2.
- 3.

