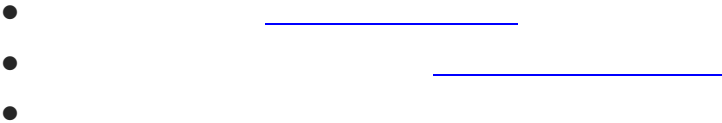


RG-WALL 1600-X9850 V2.0

V1.0

©2000-2023





1

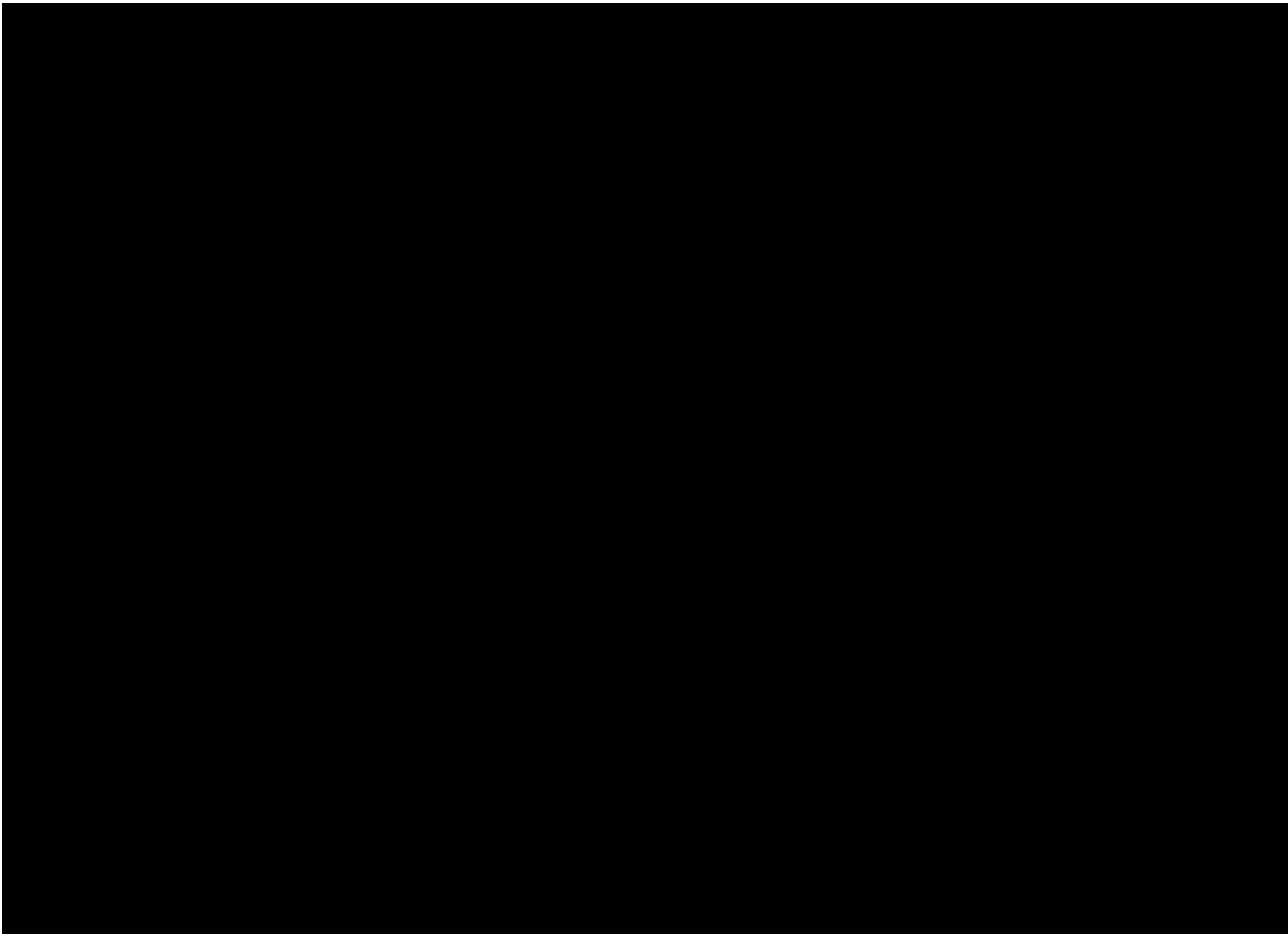
RG-WALL 1600-X9850 V2.0
40G/25G/10G/1G

158Gbps

RG-WALL 1600-X9850 V2.0

1.1 RG-WALL 1600-X9850 V2.0

RG-WALL 1600-X9850 V2.0



2

2.1



RG-WALL 1600-X9850 V2.0



2.1.1

-
-
-

2.1.2

- -
 -
 -
-
-

2.1.3

- -
 -
 -
 -
-

2.1.4

RG-WALL 1600-X9850 V2.0
RG-WALL 1600-X9850 V2.0

-
-

-
-

2.2.3

RG-WALL 1600-X9850 V2.0

-
-
-

RG-WALL 1600-X9850 V2.0

0°C-40°C	20%-90%



1.5M 0.4M

2.2.4

	0.5	1	3	5
/	1.4 x 10	7 x 10	2.4 x 10	1.3 x 10



RG-WALL 1600-X9850 V2.0

	mg/m ³	mg/m ³
	0.2	1.5
	0.006	0.03
	0.04	0.15
	0.05	0.15
	0.01	0.3

2.2.5

RG-WALL 1600-X9850 V2.0

- RG-WALL 1600-X9850 V2.0 100-240 VAC, 47-63 Hz

2.2.6

RG-WALL 1600-X9850 V2.0

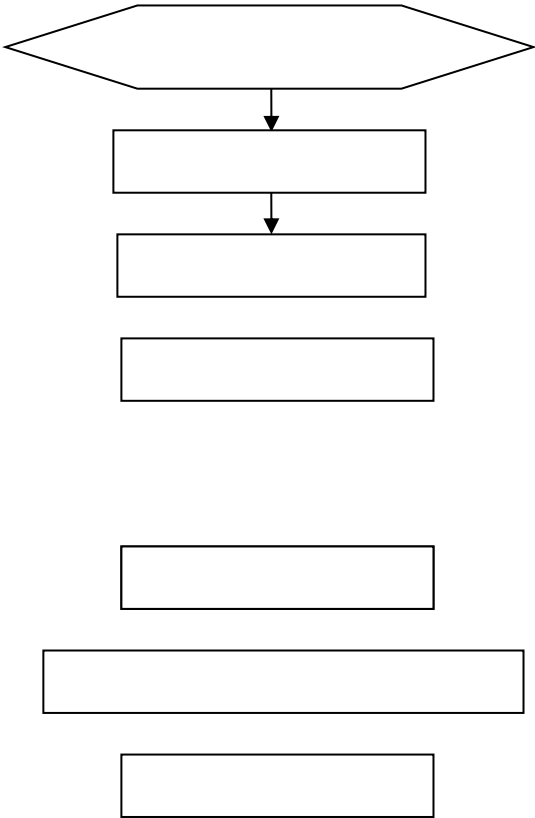
2.2.7 EMI

3

RG-WALL 1600-X9850 V2.0



3.1



3.2

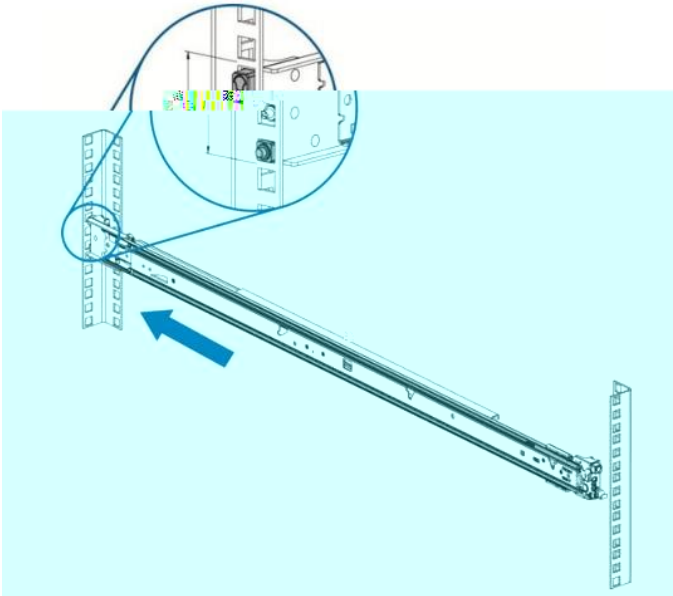
RG-WALL 1600-X9850 V2.0

-
-
-
-
-

3.3

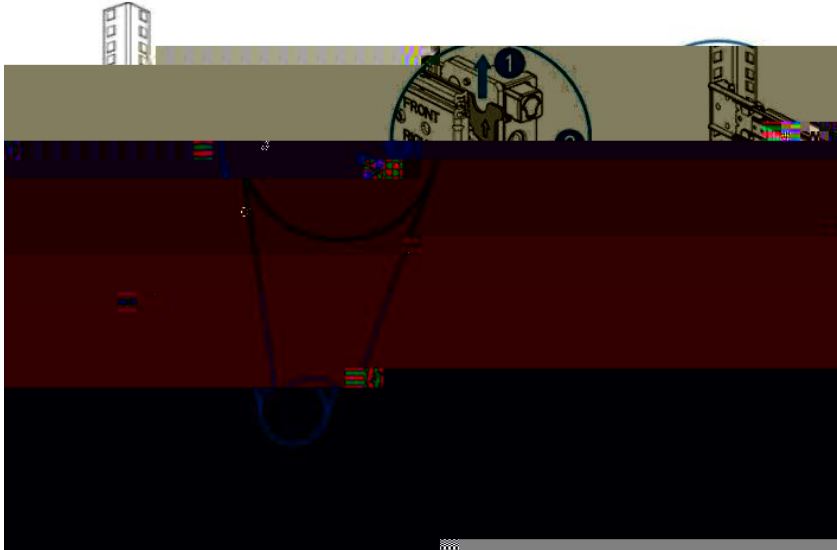
-
-
-
-
-

5mm



2) 1

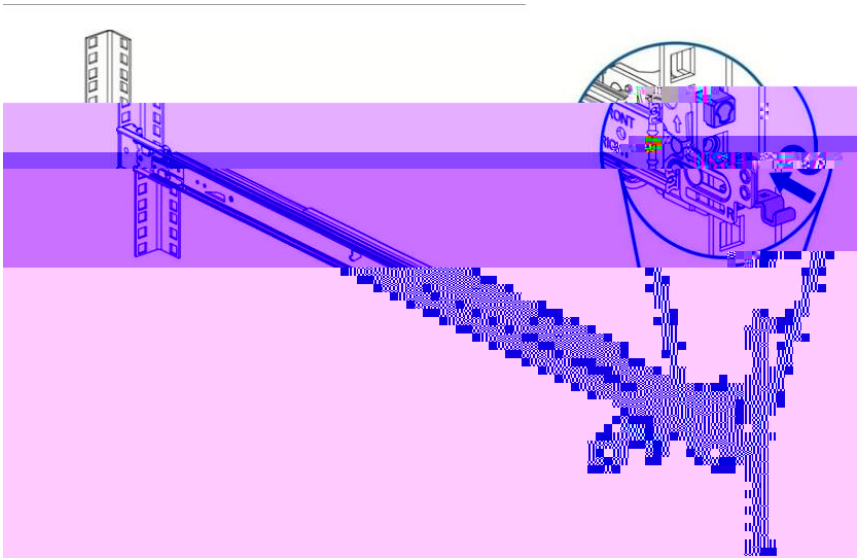
2



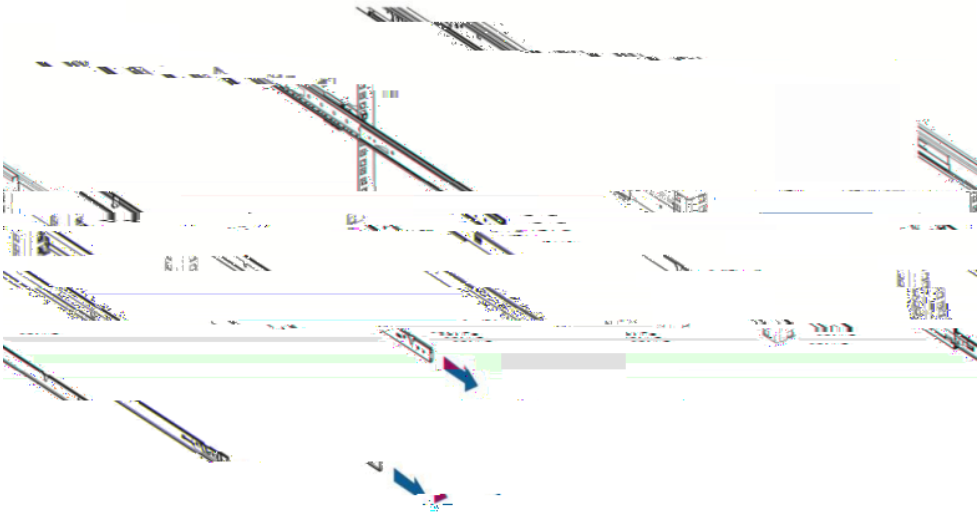
3)

1

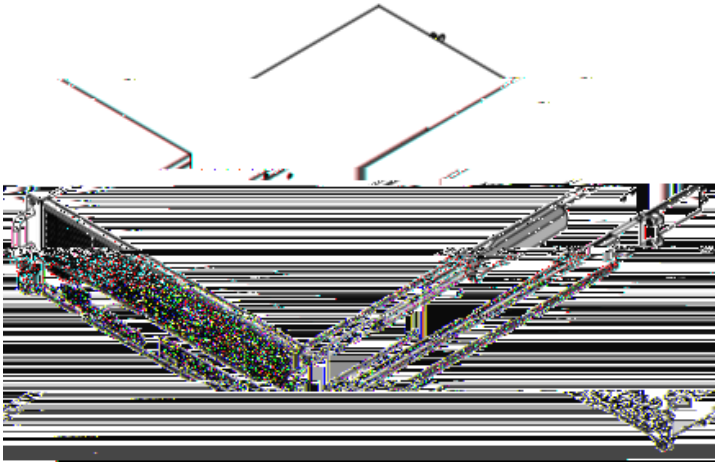
2



4) 2 3



4)



3U

3U

X9850 V2.0

■

- 5)
- 6)
- 7)

3.5

-
-
-
-
-

16A

- 8)
- 9)

3	1.5	14AWG
---	-----	-------

3.6

-
-

- 10)
- 11)

-
-

- 14)
- 15)
- 16)

3.8

-
-

SFP+

28)

29)

SFP+

8

4

4.1

PC

Console

30)

31)

■	PC	PC	Windows3.1	Terminal	Windows 95/98/NT/2000/XP
■			9600	8	1

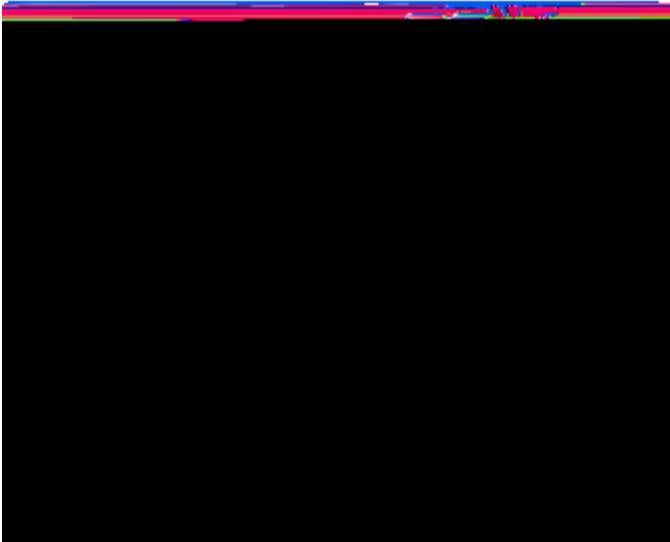
32)

4-1



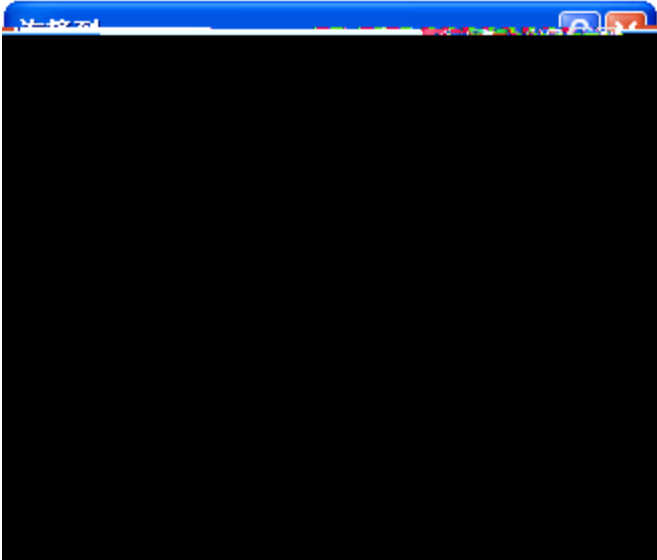
33)

4-2



34)

4-3

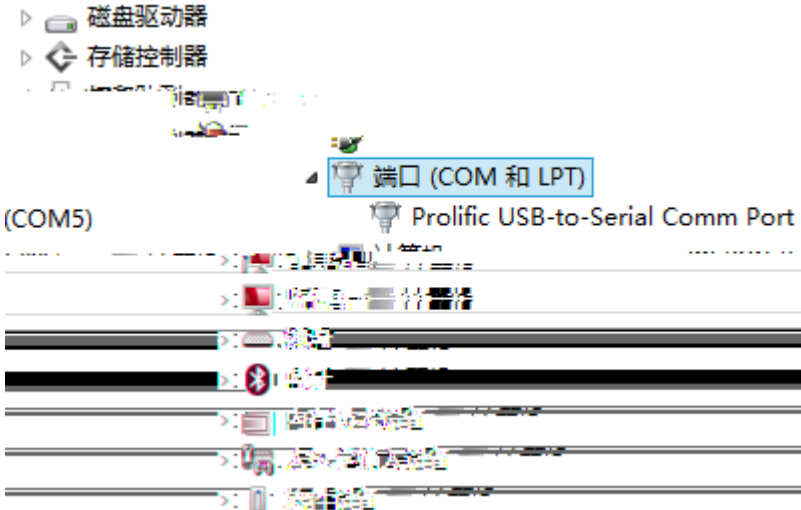


35)

4-4

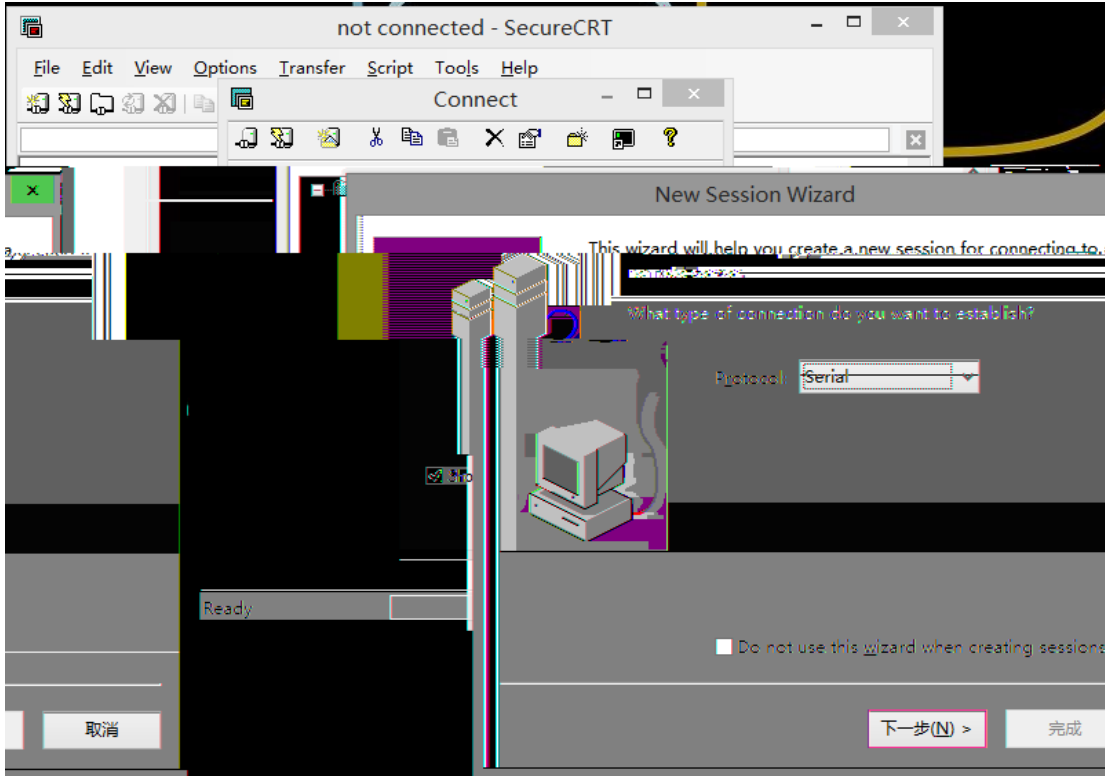
36)

- USB Console USB Console Console USB PC
-



9600 8 1

37)



38)

4-9

4-10



5

5.1

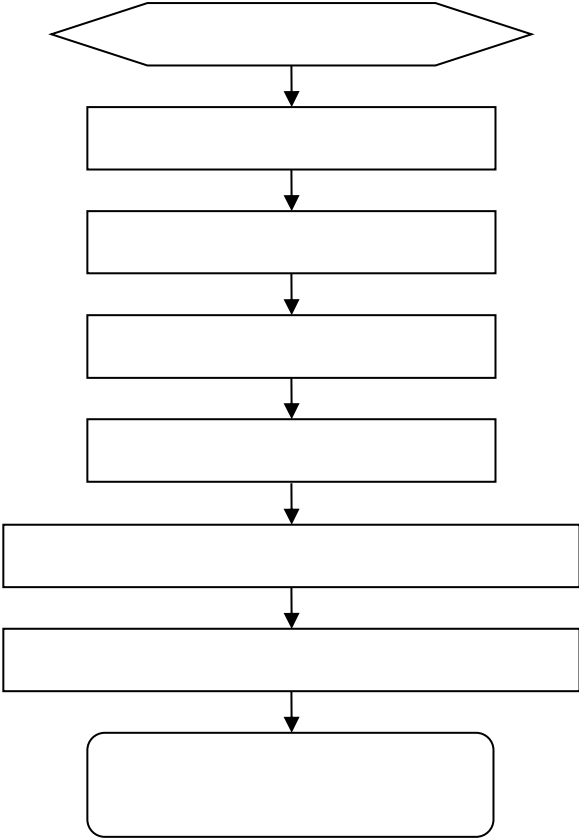
RG-WALL 1600-X9850 V2.0
5-1 RG-WALL 1600-X9850 V2.0

 RG-WALL 1600-X9850 V2.0	RG-WALL 1600-X9850 V2.0	Internet	Telnet
	RG-WALL 1600-X9850 V2.0	RG-WALL 1600-X9850 V2.0	

5.2

6

6.1



6.2

Status Power

link

1

2

3

4

1310nm

1550nm

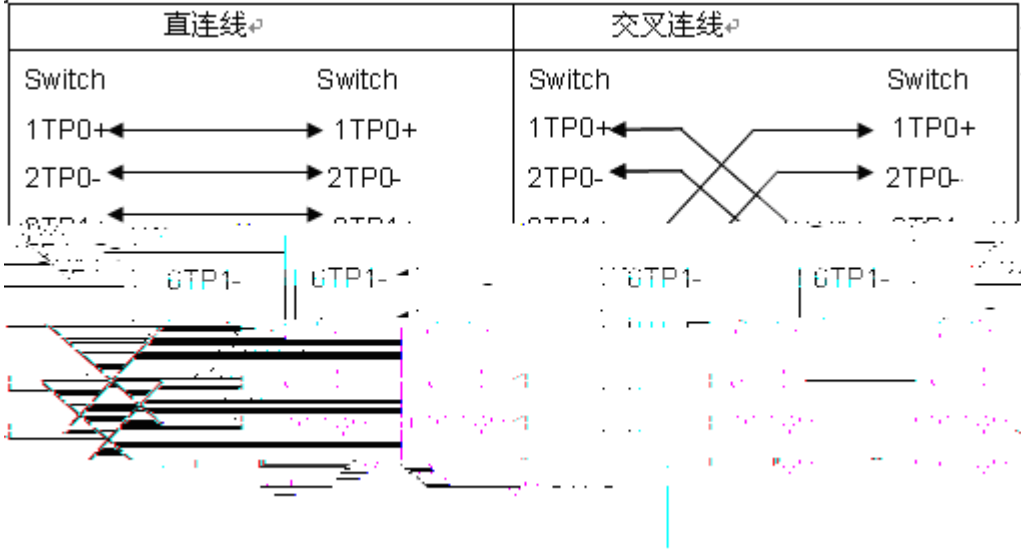
A

1000BASE-T/100BASE-TX/10BASE-T

MDI/MDIX Crossover

1000BASE-T IEEE 802.3ab 100 1000BASE-T 4 100-ohm 5 5 4 UTP STP 1000BASE-T

A-1 1000BASE-T



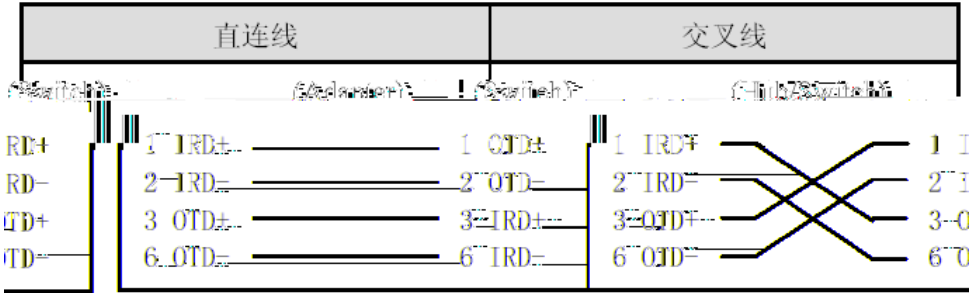
100BASE-TX/10BASE-T 100-ohm 5 100 10Mbps 100-ohm 3,4,5 100BASE-TX/10BASE-T 100Mbps

A-2 100BASE-TX/10BASE-T

Pin	插座	插头
1	Input Receive Data+	Output Transmit Data+
2	Input Receive Data-	Output Transmit Data-

100BASE-TX/10BASE-T

A-3 100BASE-TX/10BASE-T



A 4



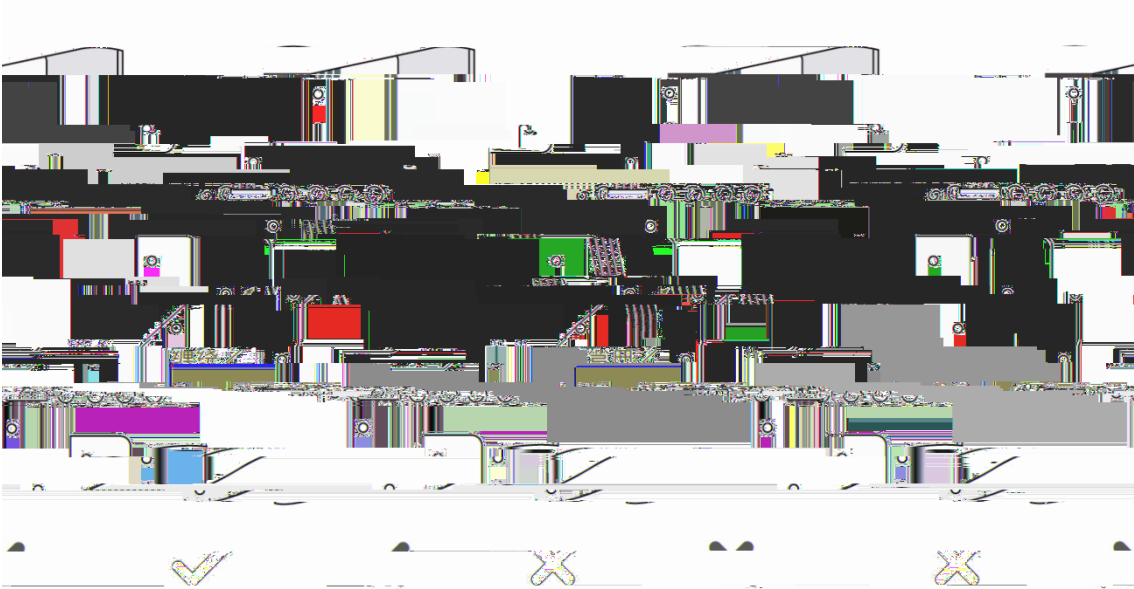
B

RG-WALL 1600-X9850 V2.0

19

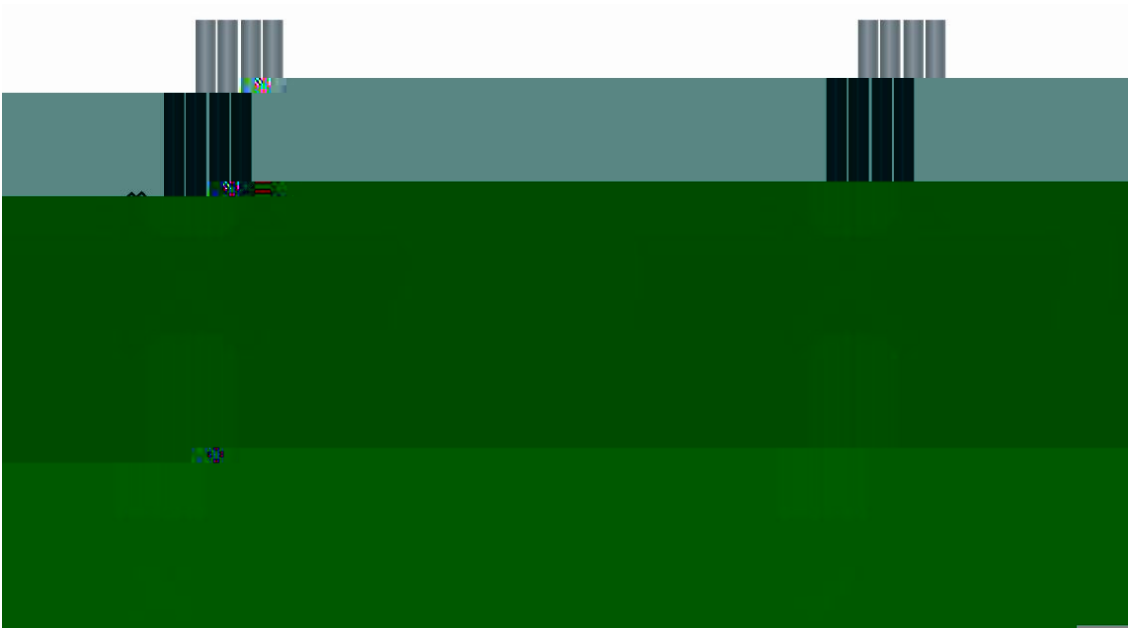
- 7 5
- 7 10
- SFP+ 5 10
- 25
- 20
- 10
-
- D-1

D-1



-
-
-
-
-

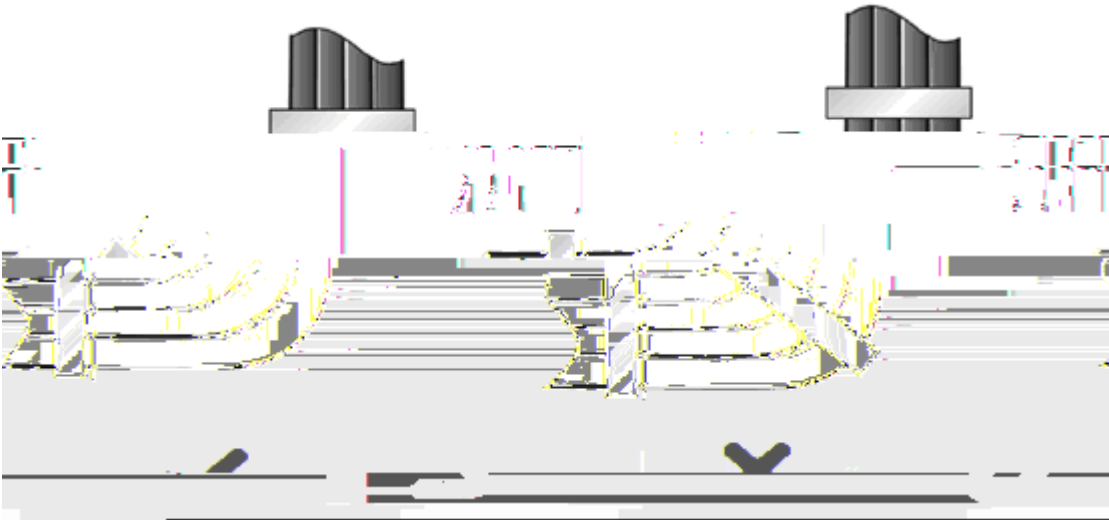
D-2



■

D-3

D-3



■

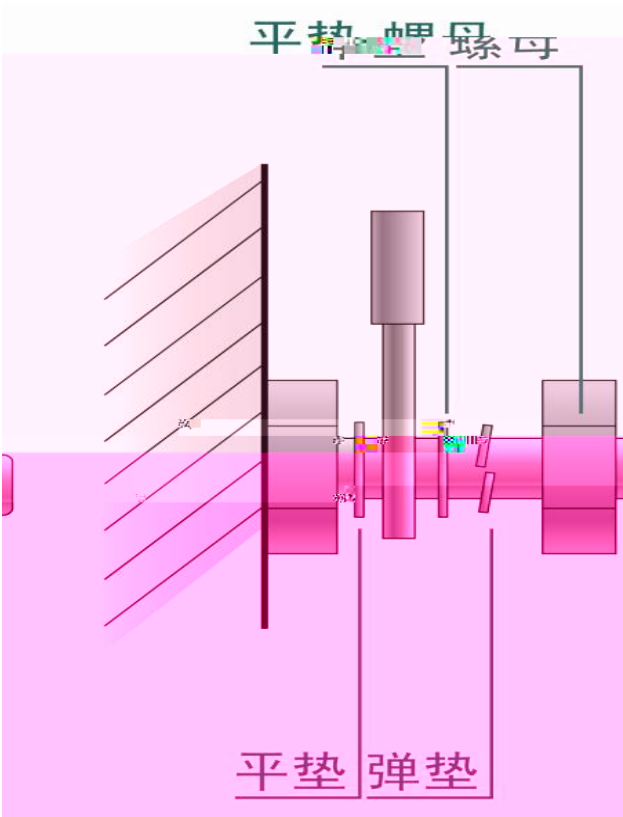
■ 220V -48V

■

■

D-4

D-4



-
-
-
-

mm	mm
10	80~150
10~30	150~200
30	200~300

-
-